



RESEARCH ARTICLE



Towards a productive model for the Sacha Inchi value chain: A scientometric approach

Diego Hernando Flórez-Martínez^{1,*} ; Gina Marcela Amado-Saavedra² ; Natalia Flórez-Tuta¹ ; Eduardo Barragán-Quijano³ ; Alexis Morales-Castañeda¹ 

¹ Corporación Colombiana de Investigación Agropecuaria – AGROSAVIA, Sede Central, km 14 vía Mosquera, Bogotá, Mosquera, código postal 250047, Colombia.

² Corporación Colombiana de Investigación Agropecuaria – AGROSAVIA, Centro de Investigación Tibaitatá, km 14 vía Mosquera, Bogotá, Mosquera. Código postal 250047, Colombia.

³ Corporación Colombiana de Investigación Agropecuaria – AGROSAVIA, Centro de Investigación Nataima, km 9, vía Espinal, Chicoral, Tolima. Código postal 733520, Colombia.

* Corresponding author: dhflorez@agrosavia.co (D. H. Flórez-Martínez).

Received: 10 October 2023. Accepted: 30 November 2023. Published: 16 December 2023.

Abstract

The diversification of agricultural and livestock production matrixes has the potential to generate value-added products in industrial and promising crops. Specifically, the countries in the Amazon basin have in the Sacha Inchi (*Plukenetia volubilis* L.) a species oriented toward market niches such as food, oils, cosmetics, pharmaceuticals, and biofuels, whose exploitation and use are aligned with the bioeconomy and circular economy megatrends. The aim of this publication was to identify and analyze the evolution of scientific and technological research in the Sacha Inchi value chain worldwide, based on a methodological design that combines technological intelligence, the analysis of scientific landscapes and bibliometric indicators and content analysis, to establish a baseline for the identification of key elements for the design of an agro-industrial production model. The methodology includes the integration of surveillance and scientific intelligence methods, scientometrics, and critical analysis of key documents selected through bibliometric indicators and expert judgment. The analysis made it possible to identify the research development lines in Sacha Inchi worldwide, and the reference documents that comprise key elements of the activities from cultivation to processing of the product obtained. The basic investigations identified will contribute to the development of productive models of Sacha Inchi in Colombia, where technical aspects must be adapted or validated in suitable agroecological zones or with productive potential to improve the yield and quality of seed for agroindustry. Medium-term research is required to genetically identify the planting material, to facilitate the selection of materials oriented to the production of fruits with the quality required by the agroindustry.

Keywords: *Plukenetia Volubilis* L.; scientific intelligence; scientometrics; industrial crops; added value; productive model; Technological surveillance.

DOI: <https://doi.org/10.17268/sci.agropecu.2023.046>

Cite this article:

Flórez-Martínez, D. H., Amado-Saavedra, G. M., Flórez-Tuta, N., Barragán-Quijano, E., & Morales-Castañeda, A. (2023). Towards a productive model for the Sacha Inchi value chain: A scientometric approach. *Scientia Agropecuaria*, 14(4), 549-569.

1. Introduction

Sacha Inchi (*Plukenetia volubilis* L.) is a climbing plant or liana, discovered in 1753 in the Peruvian Amazon. The etymology of its common name derives from two Quechua words: 'Sacha,' which means wild, and 'Inchi,' a term that refers to the peanut produced by the plant. Its production in the wild and under cultivation occurs in Peru, Bolivia, and the Antilles and, to a lesser extent, in Suriname, Venezuela, Colombia, Ecuador, and Brazil (Alayón & Echeverri., 2016). Various common names are recognized, such as *sacha yuchi*, *sacha yuchiqui*, *sacha inchik*, bush peanut, wild peanut, and Inca

peanut. Its cultivation can be conducted in areas with an altitude between 30 and 2000 meters above sea level in tropical or subtropical climate conditions, with temperatures between 10 °C and 26 °C and average relative humidity of 78% (Flores & Lock, 2012).

The development of its production system as a crop of economic and nutritional interest has spread to south-eastern Asian countries such as Bangladesh, China, South Korea, Malaysia, Taiwan, Thailand, and Vietnam (Wang et al., 2018). This tendency has occurred mainly for the production of oil with a high content of essential omega fatty acids and as part of the dynamics of the vegetable protein market in

the world characterized by incorporating this species into protein mixtures and its consumption as dried fruit (Mordor Intelligence, 2020b, 2020a). As a production system, Sacha Inchi cultivation has focused on obtaining and processing its seed for direct consumption or as raw material to obtain flour and oil for direct consumption or use in culinary preparations (Céspedes, 2013; del-Castillo et al., 2019; Del Carmen & Lucia, 2018). In more recent research, the analysis of its properties and nutritional characteristics has focused on the content of phenolic compounds and antioxidants (Chirinos et al., 2016; Benitez et al., 2015; Soongprasit et al., 2019).

Colombia shares with Peru (the country of origin of the species) the center of origin of this plant in the Amazon basin. However, the consolidation of Sacha Inchi as a productive system or productive chain that integrates the different actors, from suppliers to consumers, through exchange flows (Castro, 2001; Castro & Lima, 2003) is emerging compared to Peru. The first plantations established in Colombia were registered in 2007 in the department of Amazonas, covering 1 ha and generating a production of 600 kg. At the end of 2020, the consolidated national production was 2,767 t, corresponding to 851.24 ha harvested and an average country yield of 1.68 t ha⁻¹ (MADR & UPRA, 2021).

The Ministry of Agriculture and Rural Development of Colombia estimates that at the end of 2019, there were 2,000 production units and 2,300 producers in the country that conduct organic crop management (99% of plantations) and integration dynamics that have led to the creation and entry into force of 50 producer organizations (Ministerio de Agricultura y Desarrollo Rural - MADR, 2019). The growth of production since 2007 has been sustained, and four productive nuclei or zones have been differentiated (Central, Pacific, Boyacá, and Orinoquía-Amazonía) (Ministerio de Agricultura y Desarrollo Rural - MADR, 2019).

However, there are difficulties in consolidating the chain due to i) lack of production planning, ii) rudimentary or non-existent phytosanitary management schemes, iii) low development of production alternatives and technological recommendations (production models), iv) heterogeneous quality parameters that make it challenging to establish local and international market niches, v) nonformal marketing channels (intermediation), and vi) lack of experience in national and international trade agreements. The previous added to the dynamics of the leading competitors in the region, such as Peru, Ecuador, and Brazil, and the growing interest

in cultivation by south-eastern Asian countries makes it necessary to develop scientific knowledge and technologies adapted to the agroecological conditions of the productive niches of the country. Consequently, the aim of this research was to identify and analyze the evolution of scientific and technological research in the Sacha Inchi value chain, based on a methodological design combining scientific and technological intelligence (Sánchez-Torres & Palop-Marro, 2002; Uehara & Moraes, 2017), the analysis of scientific landscapes and bibliometric indicators (Aria & Cuccurullo, 2017; van Eck & Waltman, 2010) and content analysis (Erlingsson & Brysiewicz, 2017) to establish as a baseline for the characterization of key elements in the design of agro-industrial production model. The reference document considered in this study was the analysis proposal of (Flórez-Martínez et al., 2021).

This research will allow the design of efficient, productive models that lead to the consolidation of the productive chain, opening niche markets for direct and processed consumption products, and access to differential certifications such as Good Agricultural Practices, and enhance nutritional value, agro-industrial potential, and production cost structure of the species. In some cases, the bibliographic materials have been prepared together with producers, collecting their experiences in cultivation and the technical knowledge of the professionals (INCAGRO, 2009). Similarly, Peru has received international cooperation support from countries such as Germany, allowing the elaboration of technical documents for this production system, focusing on bio trade, agroforestry, agroecology, and organic production (Chuquizuta et al., 2008; INCAGRO, 2007). In Colombia, there are only technical manuals and brochures with general content, for crop management. However, references to complete updated documents containing information such as the one described above for Peru have not been identified.

Worldwide, there are different references and studies that are identified in terms of management of the productive system and use of sachá inchi in recent years (see supplementary material), however, in Colombia the information is very limited, requiring the realization of investigations that make it possible to identify aspects of the crop and its agro-industry, which serve as a basis for the development and validation of the productive model. The article was structured in three sections: i) the methodological design of the research, ii) the results obtained and the discussion of the results, and iii) conclusions and future work.

The Ministry of Agriculture and Rural Development of Colombia and the Colombian Agricultural Research Corporation AGROSAVIA agreed on the concept of a productive model as the set of knowledge based on sustainable technologies applicable to a productive system developed in a specific region, and which therefore takes into consideration, among others, environmental, social, cultural, and economic factors. Its documentary expression presents information in a clear and concrete way about each of the factors related to a productive system and the technologies adapted to the conditions of a system, generated from expertise and technical or agronomic logic that, with its application, improve substantively productivity and competitiveness in a specific region (AGROSAVIA Editorial, 2022)

2. Methodology

The methodological design of the research was based on technological mining principles for the identification of key elements in indexed scientific publications (García-García & Rodríguez, 2018; Newman et al., 2014; Porter, 2005) using software tools specialized in technology surveillance (Palop & Martínez, 2012), scientometrics (Leydesdorff & Milojević, 2015), and scientific landscape analysis such as VOSviewer® and Bibliometrix. This type of analysis helps to identify not only the evolution of a research area, its trends, and future work (Moral-Muñoz et al., 2020) but also to establish critical, comparative, and purposeful analyzes against best practices in research fields through complementary methods such as benchmarking (Domínguez et al.,

2005) or qualitative content analysis (Hsieh & Shannon, 2005). To this end, four phases were established in the methodological design (Figure 1).

2.1 Phase 1. Data and information retrieval strategy

In this phase and based on the technical knowledge of the Sacha Inchi production system and in different areas related to the design of production models (integrated management of production systems, plant physiology and nutrition, harvest, postharvest and processing management, pests and diseases control, planting material and genetic breeding, and socioeconomics), the search strategy was proposed in the Scopus® publication indexing engine of the Elsevier® publishing house. This strategy allows the retrieval of scientific publications for this production system as a baseline for Phase 2 (trend analysis).

2.2 Phase 2. Trend analysis

Once the metadata was retrieved from Scopus®, bibliometric (activity indicators and co-authorship maps) and scientometric (maps of sciences, of invisible schools, thematic and coupling) analyzes were built. These understand the trends and current state of research on Sacha Inchi worldwide.

2.3 Phase 3. Selection and analysis of key publications

Through scientometric and bibliometric indicators and the experience and knowledge of the work team, the most relevant articles related to the areas of knowledge that contribute to the design of productive models were selected. These documents were analyzed in detail to identify the best practices associated with the production system.

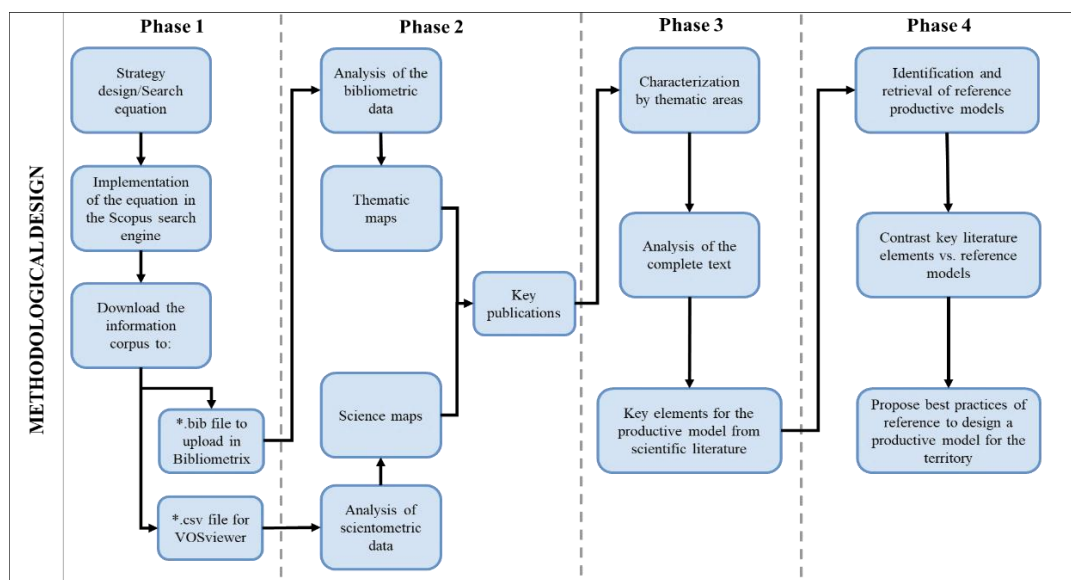


Figure 1. Four phased methodological design of the research.

2.4 Phase 4. Approach to best practices

The key elements extracted from the scientific literature were contrasted with the reference production models of Peru and Ecuador and the current practices developed by Colombian producers. The analysis contributed to selecting priority elements that will be the basis for designing a production model for the Sacha Inchi chain in Colombia. For this, seven key variables were analyzed, including geographic area and environment, social environment, information on the species, nutritional value, technical management recommendations, postharvest and commercialization, and market.

3. Results and discussion

The implementation of the methodological design was developed sequentially, so the results of each phase became the input of the next one. Between phases 2 and 3, feedback was generated for selected Scopus® publications based on scientometric indicators. When analyzed in full text, the reading of titles and abstracts did not contribute to the key elements of the productive model.

3.1 Phase 1. Data and information retrieval strategy

The search strategy designed included the interaction of the terms related to the scientific name and common names of Sacha Inchi (study object) and the terms associated with the thematic areas of interest, i.e., postharvest and processing, planting material and genetic breeding, socioeconomics and business development, integrated management of the production system, and management of pests and diseases (work object). The combination of the set of keywords of the study object with each of the

sets of words of the objects generated a corpus of 418 publications. **Table 1** presents the structural equation used.

3.2 Phase 2. Trend analysis

The bibliometric analysis identified the knowledge generation behavior concerning Sacha Inchi through activity indicators. **Figure 2** presents the dynamics of annual publications and science growth according to the Solla-Price Law, which determines the annual growth rate and the period it takes for publications to double in number (**Price, 1976**). The growth percentage of scientific publications in Sacha Inchi between 2002 and 2023 (October) was 34.93%, implying that every 2.31 years, the accumulated number doubles. In addition to the behavior of scientific publications (generation rate), it is crucial to know the dynamics of citations that the generated knowledge receives as an indicator of research relevance (**Mingers & Leydesdorff, 2015a**) (**Figure 3**).

In **Figure 3**, Solla-Price Law, was adapted to determine the annual growth rate of citations and the period it takes for citations to double in number (**Price, 1976**). The growth percentage of citations related to scientific publications in Sacha Inchi between 2002 and 2023 (October) was 24.66%, implying that every 3.14 years, the accumulated number doubles. The behavior of these indicators is presented, highlighting that, the articles with the highest number of citations in the analysis period were recorded in 2011, 2014 and 2018 years. Furthermore, it can be inferred that the publications generated in these years are the most relevant for Sacha Inchi research.

Table 1
Structural equations used in the search strategy implemented on scientific databases

Study object	Work object	Records
(Plukenetia volubilis" OR "sacha inchi" OR "sacha peanut" OR "mountain peanut" OR "inca nut" OR "inca peanut") 418 publications	Postharvest and processing ("postharvest*" OR "transformation" OR "harvest*" OR "storage" OR "oil production" OR "extraction technolog*" OR "postharvest technology" OR "postharvest physiology" OR "value added" OR "packing" OR "equipment" OR "oil extraction" OR "food" OR "oil")	321
	Planting material and genetic breeding ("seed*" OR "genetic" OR "genotypes" OR "plant variet*" OR "germplasm" OR "seed collection" OR "seed production" OR "genetic markers" OR "varietal description")	200
	Socioeconomics and business development ("market*" OR "commercial*" OR "socioeconomic" OR "Indigenous knowledge" OR "Indigenous practices" OR "ancestral knowledge" OR "ancestral practices" OR "participatory diagnostic" OR "family farm*" OR "rural sociology" OR "productive chain" OR "value chain" OR "agribusiness")	53
	Integrated management of the production system ("crop management" OR "agricultural practices" OR "almond" OR "leave use" OR "plant structures" OR "agronom*" OR "crop residues" OR "nutritional requirements" OR "plant nutrition" OR "plant physiology" OR "forage" OR "crop" OR "biochemistry")	82
	Management of pests and diseases ("pest*" OR "coccidae" OR "lepidoptera" OR "lonchaeidae" OR "coleoptera" OR "fung*" OR "bacterium" OR "bacteria" OR "virus" OR "nematode*" OR "thrip*" OR "pest management" OR "plague*" OR "biocontrol" OR "stem" OR "bacterial wilt" OR "vine wilt disease" OR "fusarium solani" OR "root knot" OR "rot stem" OR "mite*" OR "glomeromycetes" OR "phytosanitary measure*" OR "diseas* control" OR "diseas* management" OR "weed management" OR "diseas* resistance" OR "biopes*" OR "pestici* residu*" OR "bacter* control*" OR "fung* control*")	45

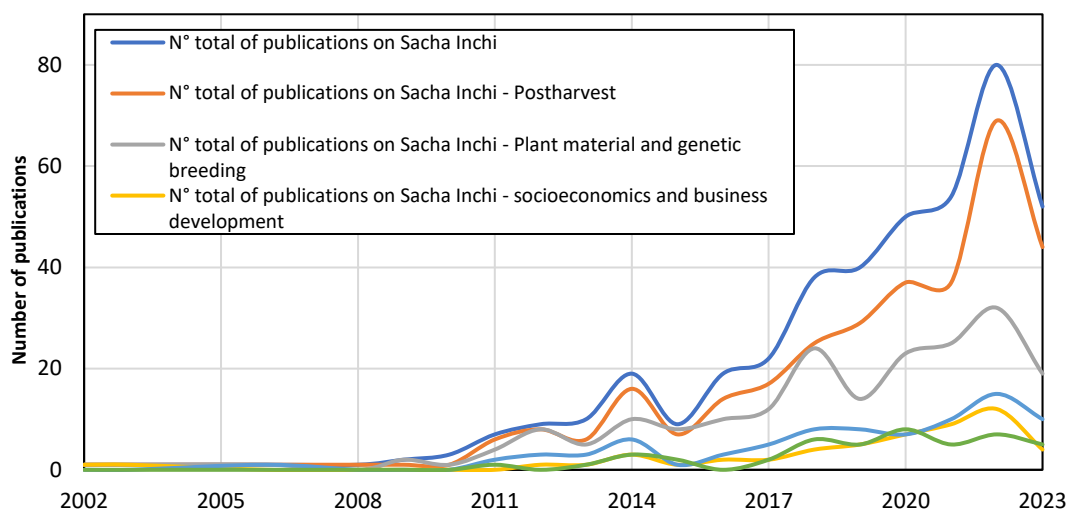


Figure 2. Dynamics of publications and growth of science in sachu inchi thematic areas research 2002-2023. Source: elaborated based on Scopus® data. Consulted in October 2023. Processing software: Excel®

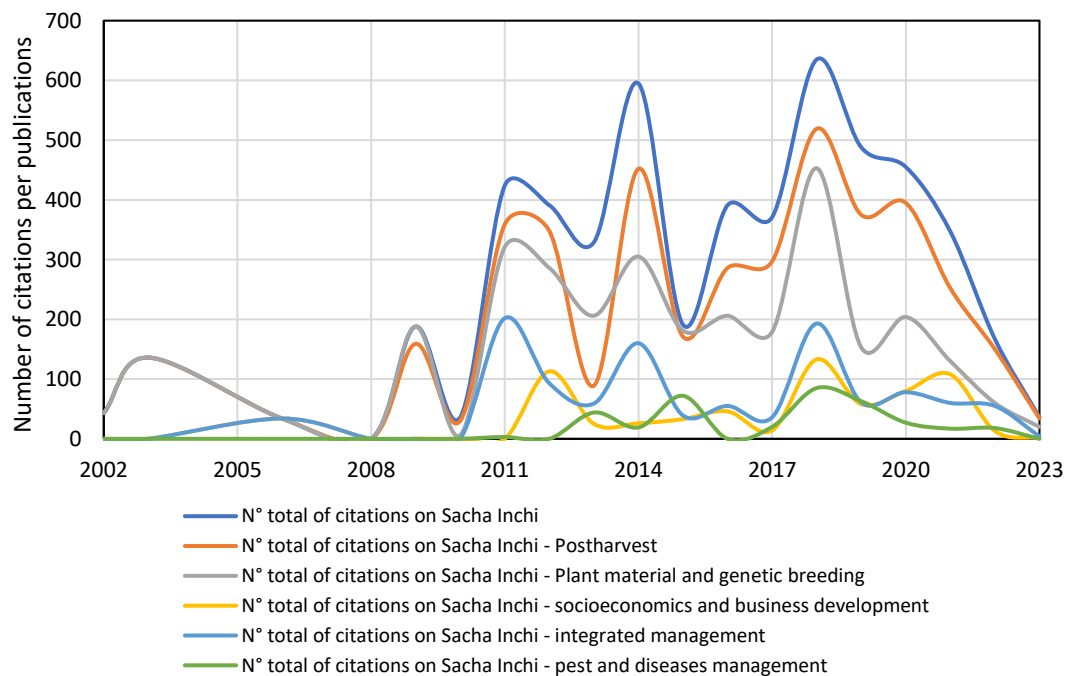


Figure 3. Citation dynamics on sachu inchi research. Source: elaborated based on Scopus® data. Consulted in October 2021. Processing software: Excel®

By implementing Lotka's Law (Mingers & Leydesdorff, 2015b), the most relevant researchers in Sacha inchi were identified, considering their number of publications and citations. Cai, Z. of Foshan University registered 15 publications, i.e., he is the most productive researcher. His study "Shade Delayed Flowering and Decreased Photosynthesis, Growth, and Yield of Sacha Inchi (*Plukenetia Volubilis*) Plants" (Cai, 2011) is the most relevant on Sacha Inchi plant physiology and crop nutrition.

Gutiérrez, L.F, a researcher from Universidad Nacional de Colombia (UNAL) in Colombia, has 347 citations in postharvest and processing, being the most cited author (Table 2). According to the citations indicator received in the database, the most cited article with 159 citations is "Supercritical CO₂ extraction of omega-3 rich oil from Sacha inchi (*Plukenetia volubilis* L.) seeds" (Follegatti-Romero et al., 2009).

Table 2

Leading researchers in Sacha Inchi, number of publications and citations received

Leading researcher	Thematic area	Institutional affiliation	Country	No. of publications	No. of citations
Cai, Z	Plant physiology and nutrition	Foshan University	China	15	299
Du, B	Postharvest and processing	South China Agricultural University	China	14	100
Li, P	Postharvest and processing	South China Agricultural University	China	14	100
Corazon-Guivin, M.A.	Plant physiology and nutrition; soil management	Universidad Nacional De San Martín	Perú	10	81
Gutiérrez, L.F.	Postharvest and processing	Universidad Nacional de Colombia	Colombia	10	347
Chirinos, R.	Postharvest and processing	Universidad Nacional Agraria La Molina	Peru	9	257
Campos, D	Postharvest and processing	Universidad Nacional Agraria La Molina	Peru	9	152
Xu, Z. F	Planting material; Plant physiology and nutrition	Guangxi University	China	9	190
Chavez, F.C.M	Planting material and genetic breeding	Embrapa	Brazil	8	77
Pedreschi, R.	Postharvest and processing	Pontificia Universidad Católica de Valparaíso	Chile	8	292
Kumar, B	Processing; Biomass for nano-biotechnology products	Universidad de las Fuerzas Armadas (ESPE)	Ecuador	6	325

Source: elaborated based on Scopus® data. Consultation date October 2023. Analysis software: Bibliometrix® and VOSviewer®

In each of the research-leading countries, various institutions that generate knowledge (number of publications) and their capacity to disseminate specialized knowledge (citations) stand out (Table 3). Peru has two leading research universities and a research center specializing in the Amazon basin (center of origin). China, with the scientific giant Chinese Academy of Science and the University of Science and Technology, has generated research lines in the use of the product and its introduction to the agroecological conditions of China. Other countries with territory in the Amazon basin, such as Ecuador, Brazil, and Colombia, have developed work on creating value chains, not only in this territory but also in areas with favorable cultivation conditions.

The interaction between research organizations, universities and private firms, allows connecting basic and applied research in favor of technological development. Specialized centers in the agricultural sector stand out, such as Instituto Nacional de Innovación Agraria (INIA), Instituto de Investigaciones de la Amazonía Peruana (IIAP), the Brazilian Agricultural Research Corporation (EMBRAPA), and Consejo Nacional de Investigaciones Científicas y Técnicas (CONICET) in Argentina. Moreover, Chinese (led by the Chinese Academy of Sciences), Peruvian (led by Universidad Nacional Agraria la Molina), and Colombian universities (led by Universidad Nacional de Colombia). The most relevant interaction between countries includes top leaders like Peru, Colombia

and Spain (green cluster), Brazil and México (blue cluster), China, United States and Thailand (Red cluster), Ecuador and India (Purple cluster) and Vietnam and Taiwan (Figure 4).

The main thematic clusters are identified by analyzing the keywords of the 418 publications selected through term co-occurrence algorithms (Cuccurullo et al., 2016) in VOSviewer. These clusters establish the diversification of research lines in Sacha Inchi. The co-occurrence network is presented in Figure 5 based on the frequencies of occurrence (number of times each research topic appears) and the intensity of co-occurrence (a measure of the interaction of two topics). The network includes 5 thematic clusters, each comprised of nodes of the same color related to a thematic area or research field, as follows.

3.2.1 Sacha Inchi as a source of essential fatty acids (Blue Cluster)

This cluster is comprised of 48 research topics, among which particular interest in the content of linoleic, oleic and linolenic acids were identified (Avila-Sosa et al., 2019; Carrillo et al., 2018). Technologies of electrospray mass spectrometry, gas chromatography and ionization, high-efficiency liquid chromatography, supercritical fluid extraction, and analysis of polyphenols, glycerols, triglycerides, diacylglycerols, triacylglycerols, and volatile compounds are integrated (Chirinos et al., 2016; Gutiérrez et al., 2017).

Table 3

Leading countries and institutions on sacha inchi research, number of publications, citations received, and collaboration index

Country	Institution	No. of publications	No. of citations	Country Collaboration Index*
Peru	Universidad Nacional Agraria La Molina (18; 562)**	93	1,295	0.529
	Pontificia Universidad Católica del Perú (12; 74)			
	Instituto de Investigaciones de la Amazonia Peruana (11; 72)			
	Universidad Nacional de San Martín (12; 87)			
China	Chinese Academy of Sciences (37; 700)	87	994	0.1
	South China Agricultural University (15; 101)			
	Southwest Forestry University (8; 92)			
Thailand	Naresuan University (13; 49)	59	316	0.294
	Mae Fah Luang University (12; 138)			
	Chiang Mai University (9; 85)			
Colombia	Universidad Nacional de Colombia (21; 524)	47	650	0.159
	Universidad ICESI (7; 70)			
	Universidad de Antioquia (4; 111)			
Brazil	Embrapa (9; 98)	44	770	0.07
	Universidade Federal Fluminense (UFF) (8; 168)			
	Universidade Federal Rural de Rio de Janeiro (UFRRJ) (8; 168)			
Spain	CSIC (6; 8)	23	257	0.750
	Pablo de Olavide University (5; 52)			
	Universidad de Sevilla (3; 50)			
Ecuador	Universidad de la Fuerzas Armadas (9; 325)	23	368	0.375
	Universidad Técnica de Ambato (3; 29)			
	Universidad de Guayaquil (2; 7)			
United States	University of Tennessee (4; 37)	20	363	0.6
	University of Houston (3; 17)			
	Florida State University (2; 86)			
Chile	Pontificia Universidad Católica de Valparaíso (7; 152)	13	314	0
	Universidad de los Andes – Chile (3; 119)			
	Universidad de Chile (3; 119)			
Argentina	CONICET (4; 39)	11	67	0.5
	Instituto Nacional de Tecnología Industrial (INTI) (3; 17)			
	INTA (3; 14)			

Source: elaborated based on Scopus® data. Consultation date October 2023. Analysis software: Bibliometrix® and VOSviewer®

* This index is calculated for each country considering the ratio of documents in which there is at least one co-author from a different country (Aria & Cuccurullo, 2017).

** The numbers in brackets correspond to (number of publications; number of citations).

A topic of recent interest is the content and bioavailability of tocopherols (Chirinos et al., 2016; Ramos-Escudero et al., 2021). Recent approaches on fatty acid profile determination of sacha inchi seeds comprises their uses as a functional additive in sauces (Wongpattananukul et al., 2022), and the chemical composition on roasted seeds focused on antioxidation activity stability (Bocanegra Morales & Galeano Garcia, 2023).

3.2.2 Antioxidant properties and nutritional value (Red Cluster)

Sacha Inchi, as an oleaginous dried fruit or as oil for direct consumption, has been of interest in the study of its nutritional chemical composition and bioavailability (Jang et al., 2020; Kim & Joo, 2019). The work topics include the analysis of phenolic compounds, antioxidant compounds, and carotenoids because of their potential use in products such as nano active compounds, biofuels, nutraceuticals, pharmaceuticals, and cosmetics (Nascimento et al., 2013). The variability of the nutritional content

is associated with factors that affect the development cycle of the fruit and the efficiency in processing and postharvest (Suwanangul et al., 2021). Furthermore, recent advances promote determining antioxidant and immunological properties of sacha inchi based dietary fiber (Zhao et al., 2022); enhancing antioxidant activities of sacha inchi oil blending it with other plant extracts (micro-encapsulation) (Chasquibol et al., 2023); and sacha inchi husks antioxidants screening (byproducts with added value) (Thuanthong et al., 2023).

3.2.3 Benefits of consuming Sacha Inchi (Green Cluster)

This cluster includes topics related to nutritional value and the positive effects of Sacha Inchi consumption (Alayón et al., 2019). Some of the topics that stand out are the accumulation of lipids, metabolic and antioxidant responses, vegetable protein content (Hanssen & Schmitz-Hübsch, 2011; Jiapong & Ruttarattanamongkol, 2021), ancestral knowledge of its botanical uses, regulation of blood

cholesterol, regulation of insulin levels (Perona et al., 2018), an ingredient in dietary supplements, protein alternative for food safety and health benefits (Vanegas-Azuero & Gutiérrez, 2018).

Instead of seeds and oil, sacha inchi by-products (husks, leaves and stems), can be used as sources of health benefits (Kittibunchakul et al., 2022).

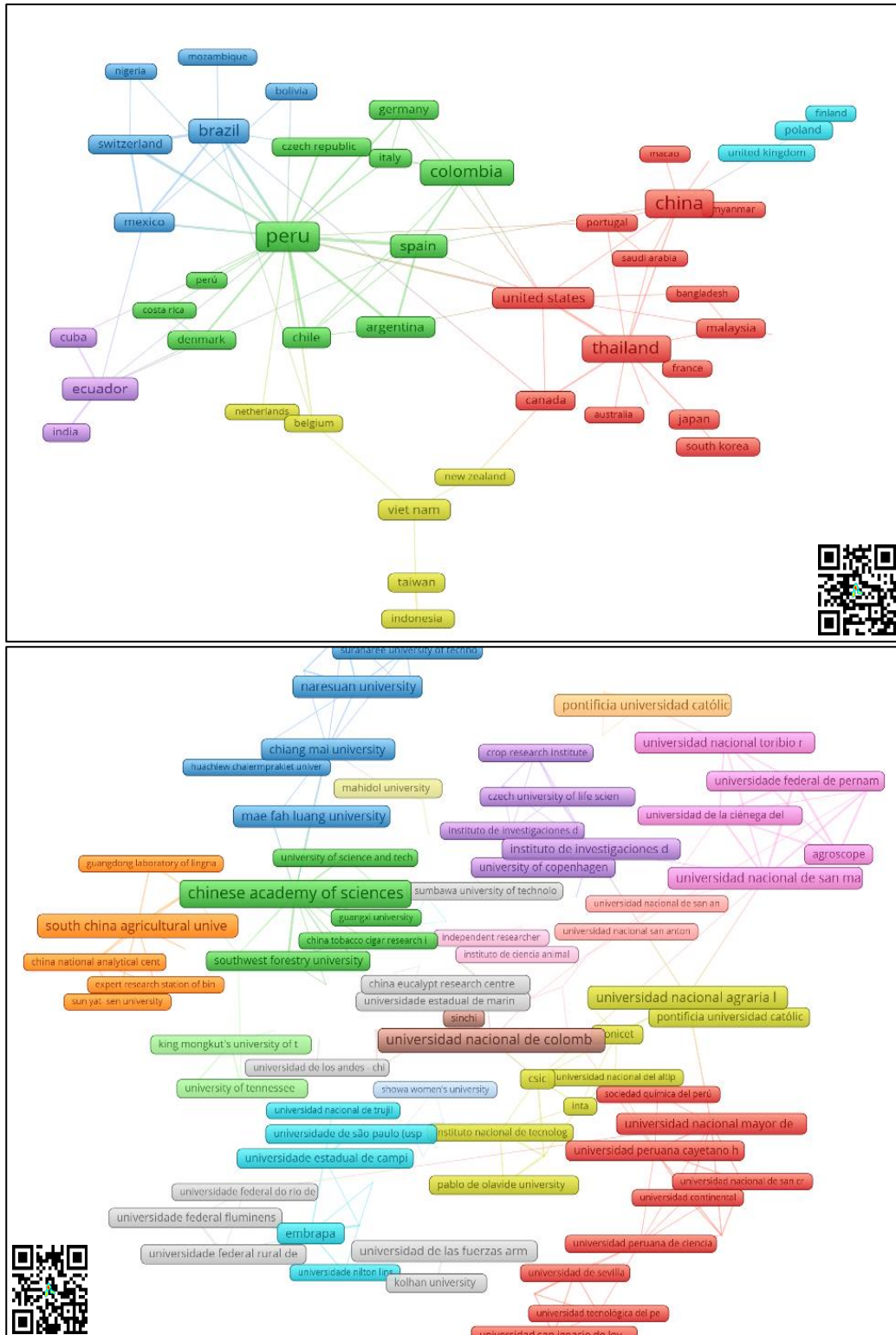


Figure 4. Countries and institutions collaboration networks for sacha inchi research. Source: elaborated based on Scopus® data. Consultation date October 2023. Analysis software: Bibliometrix® and VOSviewer®.

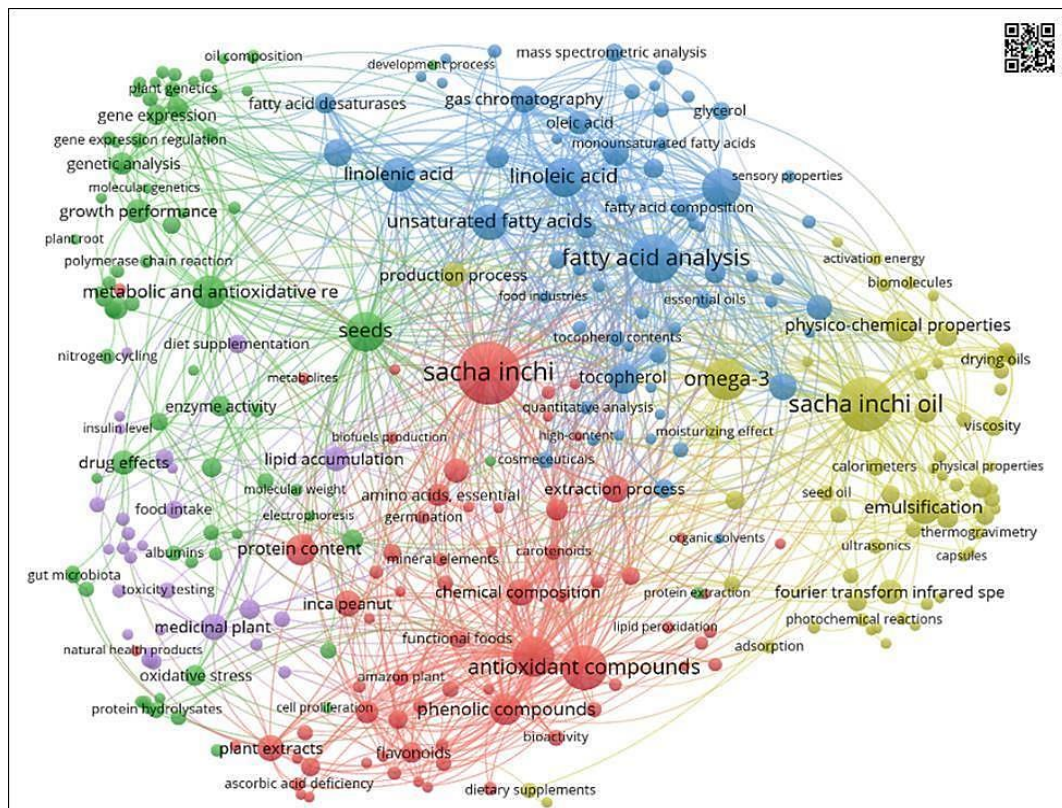


Figure 5. Co-occurrence network of keywords that conforms research thematic clusters. Source: elaborated by based on Scopus® data. Consultation date October 2023. Analysis software: VOSviewer®.

Sacha inchi oil is considered for clinical and cosmetic skin treatments (Poljšak & Kočevar Glavač, 2022); as a main ingredient for functional foods like yogurt and elder-friendly drinks (Kim et al., 2023; Villamil et al., 2023) with high protein and essential amino acids content. Finally, sacha inchi oil and extracts have been used as an input for nutritional supplementation on tilapia productive chains (Simawan et al., 2023) and broiler farms (Alcivar-Cobena et al., 2023).

3.2.3 Benefits of consuming Sacha Inchi (Green Cluster)

This cluster includes topics related to nutritional value and the positive effects of Sacha Inchi consumption (Alayón et al., 2019). Some of the topics that stand out are the accumulation of lipids, metabolic and antioxidant responses, vegetable protein content (Hanssen & Schmitz-Hübsch, 2011; Jiapong & Ruttarattanamongkol, 2021), ancestral knowledge of its botanical uses, regulation of blood cholesterol, regulation of insulin levels (Perona et al., 2018), an ingredient in dietary supplements, protein alternative for food safety and health benefits (Vanegas-Azuero & Gutiérrez, 2018). Instead of seeds and oil, sacha inchi by-products (husks, leaves and stems), can be used as sources of health benefits (Kittibunchakul et al., 2022).

Furthermore, sacha inchi oil is considered for clinical and cosmetic skin treatments (Poljšak & Kočevar Glavač, 2022); as a main ingredient for functional foods like yogurt and elder-friendly drinks (Kim et al., 2023; Villamil et al., 2023) with high protein and essential amino acids content. Finally, sacha inchi oil and extracts have been used as an input for nutritional supplementation on tilapia productive chains (Simawan et al., 2023) and broiler farms (Alcivar-Cobena et al., 2023).

3.2.4 Sacha Inchi oil, added value of the benefit (Yellow Cluster)

Sacha Inchi oil for direct consumption and as an active ingredient for the design of omega 3, 6, and 9 essential fatty acid supplements (Bondioli et al., 2020; da Silva Soares et al., 2021). This entails focusing on unsaturated fatty acids in oil extraction and analysis and conservation of their physicochemical properties, especially regarding their stability against oxidation under storage (Kumar et al., 2014; Niu et al., 2014). Oil analysis technologies, such as thermogravimetry, nuclear magnetic resonance, Fourier-transform infrared spectrometry, and calorimetry, are identified (Vicente et al., 2018). Similarly, packaging and storage technologies focused on the bioavailability of fatty acids, such as spray drying equipment, oil microencapsulation, integration of

surfactant compounds, and biopolymers to form nanoemulsions (Silva et al., 2019; Tunkam & Satirapipathkul, 2016). Other advances in sacha inchi uses for added value products, is the use of leaves extracts for gold nanoparticles (Kumar et al., 2022); the determination of oil authenticity through NIR spectrometer with data driven approach (Tirado et al., 2023); and functional foods formulation using microencapsulated dried Sacha inchi (Rodríguez-Cortina & Hernández-Carrión, 2023).

3.2.5 Integrated crop management (Violet Cluster)

It includes most of the research topics required to design specific production models (Valente et al., 2017). The most outstanding practices are agroforestry systems, vegetative propagation (Cachique et al., 2018), phylogenetic relationships (Ocelák et al., 2015), seedling growth (Rodrigues et al., 2014; Tian et al., 2013), floral development (Fu et al., 2018a), and the use of growth promoters (Pezo et al., 2019). In addition, the genetic analysis of seeds and seedlings through transcriptomic sequencing (Liu et al., 2020), genomic profiles (Valente et al., 2017), Ribonucleic Acid (RNA) extraction, and high-efficiency sequencing stands out (Villanueva-Corrales et al., 2021). Regarding soil management sacha inchi crops establishing promotes Arbuscular Mycorrhizal Communities

improvement (de la Sota Ricaldi et al., 2023); soil water availability and light intensity modifies photosynthetic response (growth rate) (Vitar et al., 2023); and combined used of NPK fertilizers and biochar (Suraya et al., 2023).

The co-occurrence network analyzed through the evolution of the topics of interest as a function of time shows the border topics in red (Figure 6) representing the combination of the progress in basic research and its contribution to technological development.

The key issues in 2022 include the valorization of Sacha Inchi oil through extraction technologies (focused on preserving physicochemical characteristics), stabilization (integration with adjuvant compounds to generate emulsions), and packaging (micro- and nano-encapsulation with biopolymers).

3.3 Phase 3. Selection and analysis of key publications

In a complementary manner, the research topics were categorized with respect to the centrality variables (importance of the topic in the field of research) and density (a measure of the degree of development of the topic) in four key quadrants (Cobo et al., 2012) as presented in Figure 7. The four quadrants analysis is presented below.

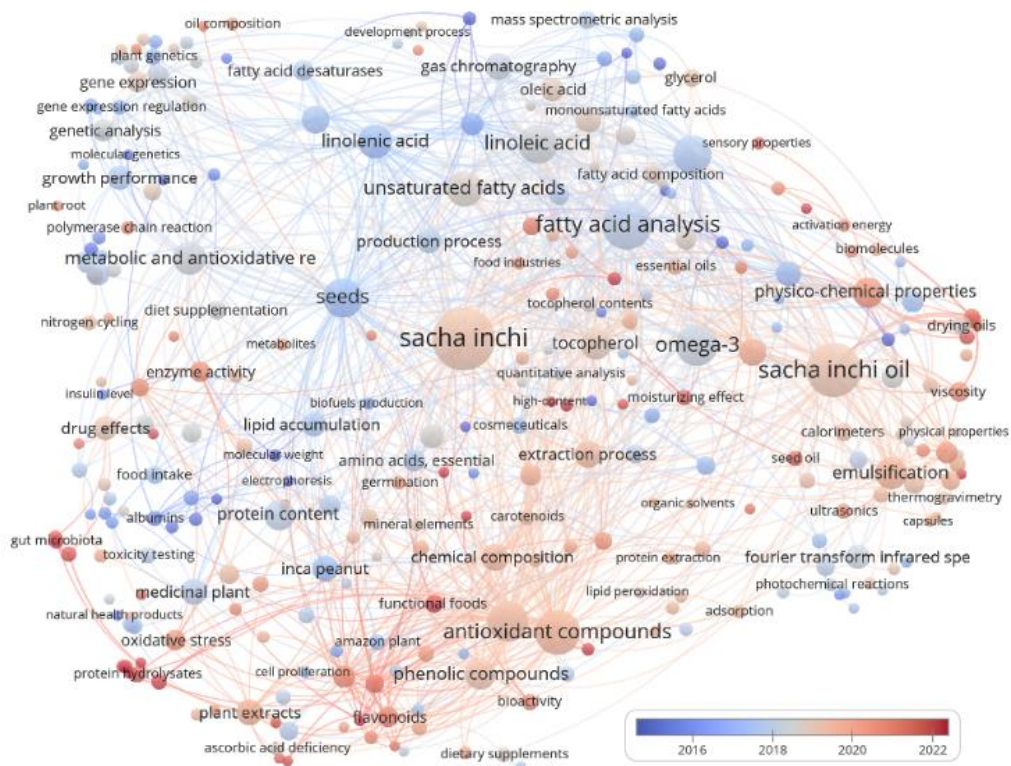


Figure 6. Temporary distribution network of thematic areas or research fields in sacha inchi. Source: Elaborated based on Scopus® data. Consultation date October 2023. Analysis software: VOSviewer®.

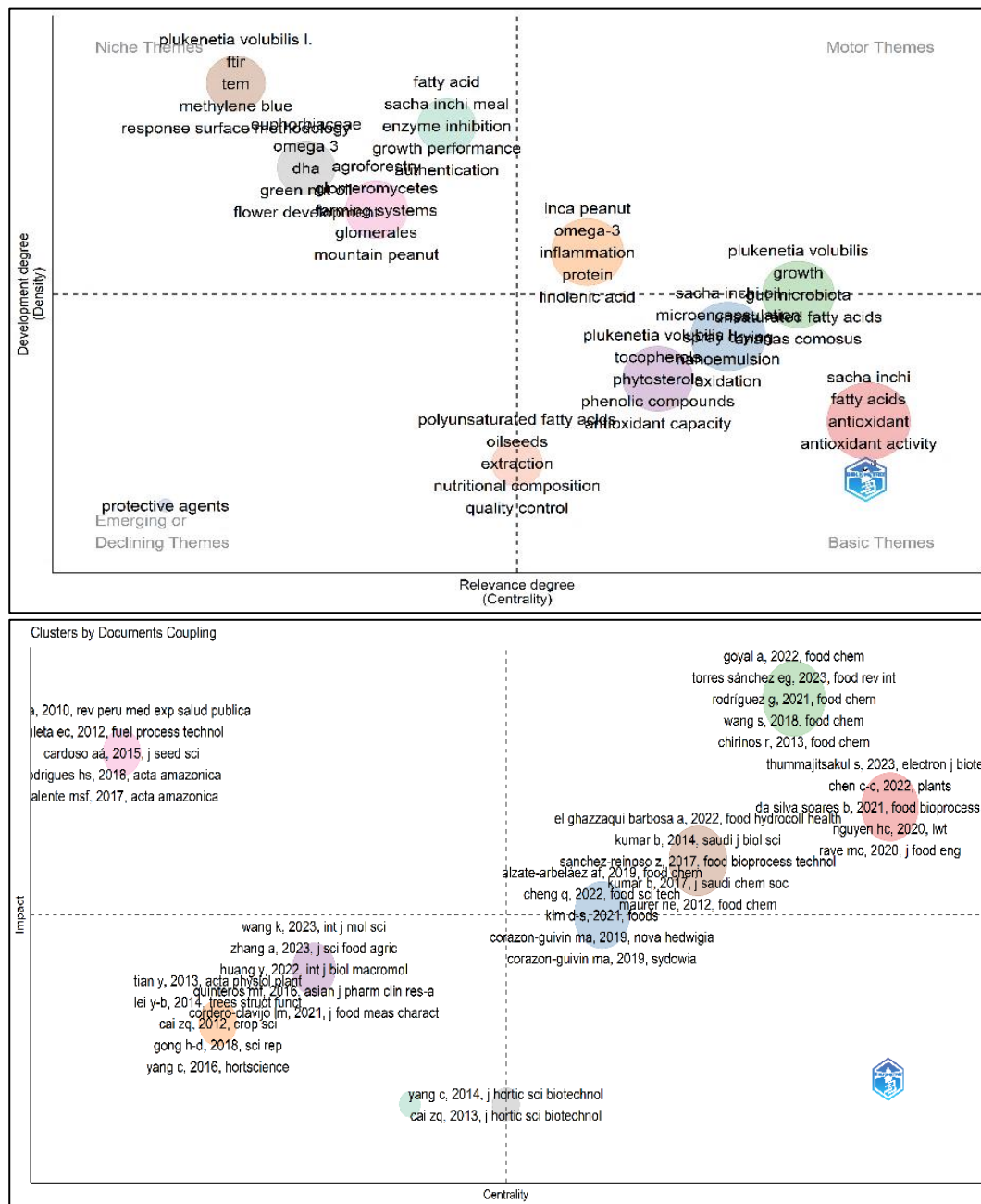


Figure 7. Thematic categorization map and bibliographic coupling for sachachi research topics. Source: Scopus® data. Consultation date June 2021. Analysis software: Bibliometrix®.

3.3.1 Motor or driving topics or 'Mainstream' (Upper Right Quadrant)

These topics encompass the current research front and are characterized by high centrality and density. The analysis of the fatty acid profiles of Sacha Inchi oil, the assessment of the kinetics and rheology of the oil, and the content of compounds of interest such as tocopherols, polyphenols, antioxidants, and flavonoids stand out. Furthermore, research on oil nanoemulsions and oil microencapsulation is emerging.

3.3.2 Basic or transversal topics or 'Base Current' (Lower Right Quadrant)

In this quadrant, topics have a high degree of development and medium importance in the research field. The diversification of topics ranges from the analysis of the fractions of essential fatty acids, with particular attention to linoleic and linolenic acids, to the study of the antioxidant capacity of the nut and the oil, passing through the floral development analysis of the plant, its physiology and soil management, microencapsulation, emulsification and spray drying techniques, among others.

3.3.3 Specialized topics or "Niches or Ivory Towers" (Upper Left Quadrant)

Specialized topics are considered highly developed; however, their relative importance in the entire field of research is low or moderate. Research in farming systems, agroforestry systems, promotion of plant growth, and vegetative development stands out. Consequently, topics related to functional foods design, health and cosmetic uses comprise a specialized research niche.

3.3.4 Emerging or declining topics (Lower Left Quadrant)

Emerging or declining topics contribute to identifying changes in the topics of the other three quadrants, as well as the appearance of new ones or those that have not generated a significant

degree of development. The use of advanced technologies such as Fourier-transform infrared spectroscopy and chemometrics to determine the content and bioavailability of antioxidants stands out as an emerging topic. Furthermore, using spectroscopy techniques contributed to guarantee authenticity of sacha inchi soil as well origin denomination controversies.

The thematic map contrasted with a bibliographic coupling analysis [78] allows identifying in these quadrants the key documents for analysis in search of elements and best practices that contribute to designing a productive model for Sacha Inchi. Table 4 shows the key documents selected through scientometric indicators and the criteria of technical experts per research team.

Table 4
Sacha inchi research selected key documents, using scientometric and expert criteria

Thematic area	Publication	Global and local citations		Thematic category	Country
Postharvest and processing	Follegatti-Romero et al. (2009)	159	50	Basic or transversal	Brazil
	Rodríguez-Cortina et al. (2022)	2	0	Motor	Colombia
	Guillén et al. (2003)	136	42	Motor/niche	Spain
	Kong et al. (2023)	0	0	Motor	Malaysia
	Sharma et al. (2023)	8	0	Niche	Taiwan
	Tirado et al. (2023)	0	0	Emergent/Niche	Perú
	Supriyanto et al. (2022)	2	0	Basic or transversal	Indonesia
	Van et al. (2022)	0	0	Motor	Viet Nam
	Gutiérrez et al. (2011)	137	61	Motor	Colombia
Productive system management	Fu et al. (2014)	27	9	Basic or transversal	China
	Fu et al., (2018b)	12	3	Basic or transversal	China
	Yang et al. (2014)	12	1	Basic or transversal	China
	Gong et al. (2018)	10	3	Inclusion of experts	China
	Lei et al. (2014)	23	1	Inclusion of experts	China
	del-Castillo et al. (2019)	12	0	Emergent/niche	Perú
	Suraya et al. (2023)	0	0	Emergent/niche	Malaysia
	Corazon-Guivin et al. (2022)	1	1	Motor	Perú
	Yamuangmorn et al. (2022)	3	0	Basic or transversal	Australia
		Chen et al. (2022)	8	0	Emergent/niche
Planting material and genetic breeding	Xiaojuan et al. (2012)	53	13	Motor/niche	China
	Cardoso et al. (2015)	14	0	Motor	Brazil
	Valente (2017)	11	0	Motor	Brazil
	da Silva et al. (2016)	6	0	Basic or transversal	Brazil
	Cardinal-Mcteague et al. (2019)	17	2	Basic or transversal	United States
	Ocelák et al. (2015)	6	5	Basic or transversal	Perú
	Valente (2017)	5	0	Emergent/niche	Brazil
	Valente et al. (2017)	2	0	Emergent/niche	Brazil
	Cachique et al. (2018)	8	2	Basic or transversal	Perú
		Kodahl et al. (2018)	4	2	Basic or transversal

	Reynaldo Solis et al. (2019)	6	2	Inclusion of experts	Perú
	Delgado et al. (2022)	0	0	Motor	Brazil
	Kodahl & Sørensen(2021)	21	0	Basic or transversal	Denmark
	de Jesús Nuñez-Rodríguez et al. (2023)	0	0	Motor	Colombia
	Henao Ramírez et al. (2022)	1	0	Motor	Colombia
	Villanueva-Corrales et al. (2021)	4	0	Motor	Colombia
	Van et al. (2022)	0	0	Niche	Viet Nam
Soil and water management	Tian et al. (2013)	44	2	Motor	China
	Jiao et al. (2012)	14	4	Inclusion of experts	China
	Geng et al. (2017)	17	2	Motor	China
	Wang et al. (2018)	4	1	Emergent/niche	China
	Solis et al. (2019)	4	0	Motor	Perú
	Wiriya et al. (2020)	5	0	Basic or transversal	Thailand
	de la Sota Ricaldi et al. (2023)	0	0	Basic or transversal	Spain
	Chen et al. (2022)	8	1	Niche	Taiwan
Plant physiology and nutrition	Cai (2011)	65	18	Motor	China
	Cai et al. (2012)	31	5	Inclusion of experts	China
	Cai et al. (2013)	6	2	Motor	China
	Yang et al. (2016)	8	3	Motor	China
	Pezo et al. (2019)	1	0	Basic or transversal	Perú
	Suraya et al. (2023)	0	0	Niche	Malaysia
	Vitar et al. (2023)	0	0	Emergent/Niche	Perú
Transversal	Wang et al. (2018)	122	31	Emergent/niche	Canada
	Chirinos et al. (2016)	24	12	Motor	Chile
	Flores & Lock (2012)	9	0	Basic or transversal	Perú
	Kodahl (2020)	30	1	Emergent/niche	Denmark
	Alayón & Echeverri (2016)	7	0	Basic or transversal	Perú
	Preciado Ramírez et al. (2021)	1	0	Motor	Ecuador
	Ramos-Escudero et al. (2021)	14	2	Motor	Perú
Pests and diseases	Márquez-Dávila et al. (2020)	6	0	Niche	Perú
	Wang et al. (2019)	1	0	Motor	China
	Chai et al. (2018)	5	0	Inclusion of experts	China
	Wang et al. (2014)	3	0	Basic or transversal	China
	Wang et al. (2020)	2	0	Inclusion of experts	China
	Nie et al. (2021)	1	0	Emerging	China
	Guerrero-Abad et al. (2021)	2	0	Emerging	Perú

Source: elaborated based on Scopus® data. Consultation date June 2021. Analysis software: Bibliometrix®.

3.4 Phase 4. Approach to best practices

The documents in **Table 4** were retrieved in full text and analyzed considering variables such as geographic area, social environment, basic information about the species, nutritional value, technical recommendations for management, commercialization, and marketing (Consult **Table 1** in the Supplementary material, this table identifies key elements that can be considered a baseline for designing a production model for Sacha Inchi). According to the analysis of the information conducted, it is identified that the scientific advances in the Sacha Inchi production system, both in its cultivation and harvest stages, as well as in postharvest

and processing, have been driven by the nutritional characteristics of the nut, the shell, and its primary extract, the oil. These lines of research are consistent with current trends in functional foods related to the utilization of bioactive compounds, such as polyphenols, flavonoids, and anthocyanins, and in other uses, such as cosmetics, pharmaceuticals, and in the pharmacological industry (Farias et al., 2019; Morris & Li Wang, 2018).

These characteristics become the added value and differential point for the promotion of Sacha Inchi, which has been observed not only in the center of origin in the Amazon basin but also in south-eastern Asian countries (Hu et al., 2018; Liu et al.,

2020; Wang et al., 2018), where its potential as food (oil and nut) and biofuel (shell and by-products), has generated the study of its production cycle, plot establishment, vegetative development, the incidence of pests and diseases and harvest and postharvest activities in protected agricultural units and botanical gardens.

In the case of Colombia, which shares a center of origin with Peru, Ecuador, and Brazil, the country will be able to promote the use of the crop not only in the departments of the Amazon region but also in agroecological zones with edaphological, climatic and agroecological suitability potential in the Andean and Orinoquía regions. For this, the analysis in the scientific literature allowed the identification of methodological elements and conclusions related to the study variables from the selection of specific articles combining scientometric criteria and criteria from the authors, as follows:

3.4.1 Geographic area and environment

The analyzed articles contemplate the main variables of the edaphoclimatic conditions required by the crop according to its productive cycle and how these affect the physicochemical and organoleptic characteristics of the seed. The most suitable altitude for the crop is between 100 and 2,000 meters above sea level, at temperatures between 10 and 26 °C and relative humidity of 78%. The most used soils are clayey, pH between 5.5 and 7.5, and adequate drainage (Alayón & Echeverri, 2016; Flores & Lock, 2012; Yang et al., 2016). Thus, the Orinoquía region located at 500 meters above sea level, with average temperatures above 27 °C, sandy soils in the windy plains and clayey soils in the highlands, with a relative humidity between 60%-80%, has the potential to develop a Sacha inchi productive model, added to the fact that departments such as Meta, Casanare, Guaviare, and Vichada, together with the department of Putumayo, cover about 700 ha, with an estimated production of approximately 1,500 t.

3.4.2 Technical recommendations for management

The influence of plant hormones on the growth and development of Sacha inchi, especially naphthalene acetic acid and cytokinin, has been documented. Besides contributing to root growth, the former has shown an essential role in seed germination and the development of taller seedlings. The latter influences the differentiation and development of female flowers, and therefore, fruit yield increases. However, their mechanism of action in this process is unknown (Fu et al., 2014; Fu et al., 2018a; Lei

et al., 2014; Luna & Bustamante, 2011). The sexual differentiation of flowers in Sacha inchi is influenced by some genes identified in the transcriptome, which also participate in the regulation of phytohormones and protein storage (Fu et al., 2018a).

Sacha inchi yield decreases considerably when the plants are exposed to low temperatures and drastic changes in humidity, physiologically affecting the photosynthetic process (Lei et al., 2014). Similarly, water deficit affects yield, for which full irrigation regimes are recommended even at the expense of efficient water use to improve seed and oil yield (Gong et al., 2018). This management is also affected by the sowing density, where a population of 4,444 plants per ha is optimal to guarantee the maximum yield of seeds and oil, regardless of the quantity of fertilizers applied (Yang et al., 2014).

The phylogenetic studies identified the genus *Plukenetia* as pantropical, with a center of origin in the Amazon. Currently, the species traditionally cultivated in the tropical Andes for medical and nutritional purposes are *P. volubilis* (Sacha Inchi or Inca Peanut), *P. carolis-vegae*, and *P. huayllabambana*. The variability found in the species has been related, among others, to anthropological processes such as migration and seed commercialization.

Regarding the management of the genetic resource of Sacha Inchi, it is worth highlighting the relevance of the studies developed for the identification of the relationship among genetic, phenotypic, and productive parameters and those of clonal and *in vitro* material production, which seeks to take advantage of the genetic variability of the species to generate conservation and crossbreeding processes. This allows capitalizing on the positive correlations between the evaluated variables, in terms of yield and quality in oil production (the content of unsaturated fatty acids). Regarding plant multiplication processes, research has been conducted aimed at evaluating the effects of factors such as temperature, relative humidity, and substrate in the seed germination process, as well as diverse types of grafting, graft protection methods, and production of *in vitro* material and from cuttings, based on protocols developed for this purpose.

Sacha inchi plants must maintain adequate water availability in critical times such as flowering and fruiting. Therefore, it is necessary to apply water through irrigation in dry periods. In general, the studies recommend the complete application of irrigation to satisfy the total evapotranspiration of the Sacha Inchi plants, facilitating the use of nutrients and helping the faster growth of the seedlings. Re-

garding water deficit, when it is moderate, *P. volubilis* plants were identified to recover fast when receiving water; in cases of prolonged deficit, its growth is limited, favoring early fruit ripening and even natural abortion, reducing seed yield. On the other hand, it is necessary to have well-drained soils to avoid excess water in the plant and favor the appearance of pests and diseases.

According to studies, the application of vesicular-arbuscular mycorrhizae favors the increase in the emission of flowers in *P. volubilis* plants. The growth of Sacha Inchi seedlings and tolerance to drought improves significantly with the colonization of arbuscular mycorrhizal fungi. Likewise, doubly inoculated plants have a more significant development under good irrigation conditions, higher specific leaf area, a proportion of the leaf area and root volume significantly higher compared to the control treatments without inoculation, all related to greater stimulation of the photosynthetic rate and water use efficiency.

It is crucial to consider the previous land uses where the cultivation of sachá inchi is to be established since, depending on the predecessor crops, it can have a significant impact on the microbial community of the soil, which, in turn, affects soil fertility characteristics. Likewise, it is advisable to maintain soil covers with *Canavalia* and *Centrosema*, which help control weeds, limit erosion, maintain soil moisture, and improve fertility, favoring plant root development, yield, and nitrogen fixation.

A wide diversity of insects is associated with the cultivation of Sacha Inchi. However, their roles in crop development have not yet been fully identified. At the economic impact level, the importance of the characterization and management of root-knot nematodes, such as *Meloidogyne incognita*, is recognized due to their negative implications on crop productivity and survival (Gonzales et al., 2015).

The literature reports identified two diseases that cause wilt in Sacha Inchi, *Fusarium solani* and *Ralstonia solanacearum*. The fungus causing stem rot was also identified as *Macrophoma phaseolina*, which can potentially cause losses of over 50% in production due to plant loss. Although frontier technologies include the design of emulsions in which nanotechnology contributes to variables such as color, viscosity, oxidation tolerance, and rheological properties, composition traceability technologies such as nuclear magnetic resonance, thermogravimetry, and infrared spectroscopy remain relevant.

The main aspects to consider for a production model include the analysis of the content of essential fatty acids (saturated, unsaturated and

polyunsaturated) in the nut and the postharvest shell and the oil as a transformed product. These contents vary depending on the cultivation areas, the agronomic management, and aspects related to plant physiology.

Finally, the management of the supply chain to transport and store harvested and processed products led to the design of collection centers, the adoption of conservation mechanisms and quality analysis (*in situ* and *ex situ*), the incorporation of real-time traceability technologies of organoleptic traits (wireless remote sensors), and analysis technologies of organoleptic traits (sensory analysis).

3.4.3 Commercialization and Marketing

The aspects related to the commercialization and marketing of products derived from sachá inchi depend on their organoleptic characteristics, nutritional content, composition based on bioactive compounds, denomination of origin, and traceability of the supply chain. The content of linoleic and linolenic acids is the key to guaranteeing success in inserting products derived from this species into a potential market (Quizhpe Salinas & Villalba Cando, 2014).

4. Conclusions and outlook

The results obtained in the research process contribute to the analysis of the current state and perspectives for the consolidation of the productive system of Sacha Inchi in Colombia. Each thematic area assessed identified regional and international references (researchers, institutions and countries) leaders in the development of knowledge and technologies for the system. Likewise, structuring the thematic axes and the work topics contributes to establishing the work niches, the points of potential exploration, the base nuclei, and the possible frontiers of knowledge.

Basic investigations will allow having references as a contribution to the development of productive models of Sacha Inchi in Colombia, where different technical aspects must be adapted or validated in suitable agroecological areas or with productive potential to improve seed yield and quality for agro-industrial use. In the same way, it is necessary to deepen the analysis of times, frequency, and conditions to conduct the diverse types of pruning in the crop to improve its productivity.

Based on the methodologies used and the results obtained, the need for future research in the medium term is identified, referring to validate an adjust of technologies managing the genetic resource and multiplying plant material, with the agroclimatic conditions of the productive areas

identified in Colombia and the most used materials by producers. Furthermore, identify genetically the planting material with known and differentiated management and productivity characteristics, facilitate the selection of materials oriented to the production of fruits with the required quality by the agribusiness to produce products such as oils, snacks or flour, among others. Eventually, this will strengthen and maintain the relationship between the producer, the agribusiness, and the market.

It is necessary to expand the study of insects associated with the cultivation of Sacha Inchi and their functions as part of the biodiversity conservation process and its ecosystem services. In the case of pest insects, such as *M. incognita*, it is necessary to know their behavior in the productive areas of the country and define structured actions for their control (Integrated Pest Management), which include, among others, the identification of resistant or tolerant materials, selection of bio controllers and production of bio inputs.

Based on the results obtained from this research and the perspectives of this productive system in Colombia, opportunities are identified to develop research that evaluates and validates the different practices used in reference countries, under the agroecosystemic conditions of the productive areas in Colombia, to determine optimal agronomic, harvest and post-harvest management conditions and promote productivity, sustainable production and competitiveness of Sacha Inchi products and by-products with prospects for international markets.

Finally, the design and implementation of a productive model for Sacha Inchi crops in Colombia requires a permanent monitoring of the scientific, commercial and technological trends, related to the key strategic areas discussed in this paper. The mapping of new insights reported in scientific literature related to crop management, phytosanitary management, soil and water management, breeding and genetic enhancement, post harvesting and added value activities, associated with similar agroecological conditions, could provide with valuable data and information for strengthening the Colombian productive model.

Data Availability

The data used to support the findings of this study are available from the corresponding author upon request.

Conflicts of Interest

The authors declare that they have no conflicts of interest between them.

Funding statement

This study was supported by the Colombian Ministry of Agriculture and Rural Development (MADR).

Acknowledgments

The authors express their gratitude to Corporación Colombiana de Investigación Agropecuaria - AGROSAVIA, as the funder of Phase I of the project Development of technological strategies to improve the productivity and competitiveness of Sacha Inchi (*Plukenetia volubilis* L.) in the municipality of Vista Hermosa (Meta).

Supplementary Materials

For further information, please consult **Table 1S**. Key elements for the Sacha Inchi productive model.

ORCID

- D. H. Flórez-Martínez  <https://orcid.org/0000-0003-1246-6513>
 G. M. Amado-Saavedra  <https://orcid.org/0000-0002-9200-912X>
 N. Flórez-Tuta  <https://orcid.org/0000-0001-8831-7595>
 E. Barragán-Quijano  <https://orcid.org/0000-0002-9260-6346>
 A. Morales-Castañeda  <https://orcid.org/0000-0002-7159-6679>

References

- AGROSAVIA Editorial (2022). Serie: Modelos Productivos. <https://editorial.agrosavia.co/index.php/publicaciones/catalog/series/Modelos>
- Alayón, A N, & Echeverri J., I. (2016). Sacha inchi (*Plukenetia volubilis* linneo): A wasted ancestral experience? Clinical evidence related to its consumption [Sacha inchi (*Plukenetia volubilis* linneo): ¿Una experiencia ancestral desaprovechada? Evidencias clínicas asociadas a su consumo]. *Revista Chilena de Nutrición*, 43(2), 167–171. <https://doi.org/10.4067/S0717-75182016000200009>
- Alayón, A N, Ortega Ávila, J. G., & Echeverri Jiménez, I. (2019). Metabolic status is related to the effects of adding of sachá inchi (*Plukenetia volubilis* L.) oil on postprandial inflammation and lipid profile: Randomized, crossover clinical trial. *Journal of Food Biochemistry*, 43(2). <https://doi.org/10.1111/jfbc.12703>
- Alayón, A. N., & Echeverri, J., I. (2016). Sacha inchi (*Plukenetia volubilis* linneo): ¿Una experiencia ancestral desaprovechada? Evidencias clínicas asociadas a su consumo. *Revista Chilena de Nutrición*, 43(2), 167–171. <https://doi.org/10.4067/S0717-75182016000200009>
- Alcivar-Cobena, J. L., Vera-Velazquez, R., Marcillo-Plua, E. A., Del Valle-Holguin, W. J., Cornejo-Cornejo, R. A., Indacochea-Ganchozo, B. S., & Martínez-Perez, M. (2023). Productive parameters in Broiler chickens using Sacha inchi cake (*Plukenetia volubilis*) as a partial substitute for soybean (*Glycine max*). *Revista Científica-Facultad De Ciencias Veterinarias*, 33(1).
- Aria, M., & Cuccurullo, C. (2017). bibliometrix: An R-tool for comprehensive science mapping analysis. *Journal of Informetrics*. <https://doi.org/10.1016/j.joi.2017.08.007>
- Avila-Sosa, R., Montero-Rodríguez, A. F., Aguilar-Alonso, P., Vera-López, O., Lazzcano-Hernández, M., Morales-Medina, J. C., & Navarro-Cruz, A. R. (2019). Antioxidant Properties of Amazonian Fruits: A Mini Review of in Vivo and in Vitro Studies. *Oxidative Medicine and Cellular Longevity*, 2019. <https://doi.org/10.1155/2019/8204129>
- Benitez, R. B., Coronel, C. T., Hurtado Ordóñez, Z. A., & Martin, J. F. (2015). Chemical composition of the shell of Sacha Inchi (*Plukenetia volubilis*) and alternatives for its use as agroindustrial byproduct. *Hombre y la Máquina*, 46, 28–32.
- Bocanegra Morales, N., & Galeano García, P. (2023). Chemical Composition, Fatty Acid Profile, and Optimization of the Sacha Inchi (*Plukenetia volubilis* L.) Seed-Roasting Process Using Response Surface Methodology: Assessment of Oxidative Stability and Antioxidant Activity. *Foods*, 12(18). <https://doi.org/10.3390/foods12183405>
- Bondioli, P., Folegatti, L., & Rovellini, P. (2020). Oils rich in alpha linolenic acid: Chemical composition of perilla (*Perilla frutescens*) seed oil. *OCL - Oilseeds and Fats, Crops and Lipids*, 27. <https://doi.org/10.1051/ocl/2020066>

- Cachique, D. H., Solsol, H. R., Sanchez, M. A. G., López, L. A. A., & Kodahl, N. (2018). Vegetative propagation of the underutilized oilseed crop sacha inchi (*Plukenetia volubilis* L.). *Genetic Resources and Crop Evolution*, 65(7), 2027–2036. <https://doi.org/10.1007/s10722-018-0659-9>
- Cai, Z. Q. (2011). Shade delayed flowering and decreased photosynthesis, growth and yield of Sacha Inchi (*Plukenetia volubilis*) plants. *Industrial Crops and Products*, 34(1), 1235–1237. <https://doi.org/10.1016/j.indcrop.2011.03.021>
- Cai, Z. Q., Jiao, D. Y., Lei, Y. B., Xiang, M. H., & Li, W. G. (2013). Growth and yield responses of *Plukenetia volubilis* L. plants to planting density. *Journal of Horticultural Science and Biotechnology*, 88(4), 421–426. <https://doi.org/10.1080/14620316.2013.11512986>
- Cai, Z. Q., Jiao, D. Y., Tang, S. X., Dao, X. S., Lei, Y. B., & Cai, C. T. (2012). Leaf photosynthesis, growth, and seed chemicals of sacha inchi plants cultivated along an altitude gradient. *Crop Science*, 52(4), 1859–1867. <https://doi.org/10.2135/cropsci2011.10.0571>
- Cardinal-McTeague, W. M., Wurdack, K. J., Sigel, E. M., & Gillespie, L. J. (2019). Seed size evolution and biogeography of *Plukenetia* (Euphorbiaceae), a pantropical genus with traditionally cultivated oilseed species. *BMC Evolutionary Biology*, 19(1). <https://doi.org/10.1186/s12862-018-1308-9>
- Cardoso, A. A., Matos Obolari, A. de M., de Lima e Borges, E. E., da Silva, C. J., & Rodrigues, H. S. (2015). Environmental factors on seed germination, seedling survival and initial growth of sacha inchi (*Plukenetia volubilis* L.). *Journal of Seed Science*, 37(2), 111–116. <https://doi.org/10.1590/2317-1545v37n2145054>
- Carrillo, W., Quinteros, M. F., Carpio, C., Morales, D., Vásquez, G., Álvarez, M., & Silva, M. (2018). Identification of fatty acids in sacha inchi oil (*Cursive plukenetia volubilis* L.) from Ecuador. *Asian Journal of Pharmaceutical and Clinical Research*, 11(2), 379–381. <https://doi.org/10.22159/ajpcr.2018.v11i2.15515>
- Castro, A. M. G. de. (2001). Prospecção de cadeias produtivas e gestão da informação. *Transinformação*, 13(2), 55–72. <https://doi.org/https://doi.org/10.1590/S0103-37862001000200004>
- Castro, A. M. G. De, & Lima, S. M. V. (2003). Cadeia Produtiva e Prospecção Tecnológica Como Ferramentas Para a Formulação de Estratégia. *I Encontro de Estudos Em Estratégia* (3S), 16.
- Céspedes, M. E. (2013). Manejo del Cultivo de sacha inchi (*Plukenetia volubilis* L.). *Programa Nacional de Medios y Comunicación Técnica* (INIA), 2. <http://repositorio.inia.gob.pe/handle/inia/509>
- Chai, X., Yang, Z., Fu, Q., Pan, B.-Z.-Z., Tang, M., Li, C., & Xu, Z.-F.-F. (2018). First Report of Root and Basal Stem Rot in Sacha Inchi (*Plukenetia volubilis*) Caused by *Fusarium oxysporum* in China. *Plant Disease*, 102(1), 242. <https://doi.org/10.1094/PDIS-06-17-0784-PDN>
- Chasquibol, N., Gonzales, B. F., Alarcón, R., Sotelo, A., Gallardo, G., García, B., & Pérez-Camino, M. del C. (2023). Co-Microencapsulation of Sacha Inchi (*Plukenetia huayllabambana*) Oil with Natural Antioxidants Extracts. *Foods*, 12(11). <https://doi.org/10.3390/foods12112126>
- Chen, C. C., Li, M. S., Chen, K. T., Lin, Y. H., & Ko, S. S. (2022). Photosynthetic and Morphological Responses of Sacha Inchi (*Plukenetia volubilis* L.) to Waterlogging Stress. *Plants*, 11(3). <https://doi.org/10.3390/plants11030249>
- Chirinos, R., Necochea, O., Pedreschi, R., & Campos, D. (2016). Sacha inchi (*Plukenetia volubilis* L.) shell: An alternative source of phenolic compounds and antioxidants. *International Journal of Food Science and Technology*, 51(4), 986–993. <https://doi.org/10.1111/ijfs.13049>
- Chuquizuta, D. P., Campos, N. A., & Calderón, S. C. (2008). *Manual de manejo agroecológico del cultivo de sacha inchi (Plukenetia volubilis L.)*. 1ª Edición. Cusco Perú.
- Cobo, M. J., López-Herrera, A. G., Herrera-Viedma, E., & Herrera, F. (2012). SciMAT: A new science mapping analysis software tool. *Journal of the American Society for Information Science and Technology*. <https://doi.org/10.1002/asi.22688>
- Corazon-Guivín, M. A., Vallejos-Tapullima, A., Rengifo-Del Aguila, S., Rondinel-Mendoza, N. V., Hernández-Cuevas, L. V., Carvajal-Vallejos, F. M., & Carballar-Hernández, S. (2022). Influence of Substrate Properties on Communities of Arbuscular Mycorrhizal Fungi Isolated from Agroecosystems in Peru. *Journal of Soil Science and Plant Nutrition*, 22(4). <https://doi.org/10.1007/s42729-022-00960-3>
- Cuccurullo, C., Aria, M., & Sarto, F. (2016). Foundations and trends in performance management. A twenty-five years bibliometric analysis in business and public administration domains. *Scientometrics*. <https://doi.org/10.1007/s11192-016-1948-8>
- da Silva, G. Z., Vieira, V. A. C. C., Boneti, J. E. B. J. E. B., Melo, L. F., & Martins, C. C. (2016). Temperature and substrate on *plukenetia volubilis* L. Seed germination. *Revista Brasileira de Engenharia Agrícola e Ambiental*, 20(11), 1031–1035. <https://doi.org/10.1590/1807-1929/agriambi.v20n11p1031-1035>
- da Silva Soares, B., de Carvalho, C. W. P., & Garcia-Rojas, E. E. (2021). Microencapsulation of Sacha Inchi Oil by Complex Coacervates using Ovalbumin-Tannic Acid and Pectin as Wall Materials. *Food and Bioprocess Technology*, 14(5), 817–830. <https://doi.org/10.1007/s11947-021-02594-2>
- de Jesús Nuñez-Rodríguez, J., Arámbula-García, C. I., & Sánchez-Frank, J. V. (2023). Altitudinal variations in the department of Norte de Santander and their relationship with sacha inchi (*Plukenetia volubilis*, L) seed yield. *Aibi, Revista de Investigación Administración e Ingenierías*, 11(2). <https://doi.org/10.15649/2346030X.3097>
- de la Sota Ricaldi, A. M., Rengifo del Águila, S., Blas Sevillano, R., López-García, Á., & Corazon-Guivín, M. A. (2023). Beta Diversity of Arbuscular Mycorrhizal Communities Increases in Time after Crop Establishment of Peruvian Sacha Inchi (*Plukenetia volubilis*). *Journal of Fungi*, 9(2). <https://doi.org/10.3390/jof9020194>
- del-Castillo, Á. M. R., Gonzalez-Aspajo, G., de Fátima Sánchez-Márquez, M., & Kodahl, N. (2019). Ethnobotanical Knowledge in the Peruvian Amazon of the Neglected and Underutilized Crop Sacha Inchi (*Plukenetia volubilis* L.). *Economic Botany*, 73(2), 281–287. <https://doi.org/10.1007/s12231-019-09459-y>
- Del Carmen, C. G. M., & Lucia, T. V. M. (2018). Knowledge networks: Diagnosis of research networks in Peru for innovation generation in derivatives of originating products, 2017. In B. D. P. L. Nunes B. Emrouznejad A. (Ed.), *Towards Sustainable Technologies and Innovation - Proceedings of the 27th Annual Conference of the International Association for Management of Technology, IAMOT 2018*. Aston Business School, Aston University.
- Delgado, J. P. M., Chaves, F. C. M., Lopes, R., Meneses, C., Valente, M. S. F., Rodrigues, F. A., Pasqual, M., Ramos, S. F., de Aguiar, A. V., & Lopes, M. T. G. (2022). Indirect Selection for Seed Yield in Sacha-Inchi (*Plukenetia volubilis*) in Brazil. *Horticulturae*, 8(11). <https://doi.org/10.3390/horticulturae8110988>
- Domínguez, O. F. C., Franco, V. M. M., & Hernandez, C. N. J. (2005). El Benchmark como Instrumento de Generación de Conocimiento Empresarial. Conference: XI Seminario Latino Iberoamericano de gestión tecnológica ALTEC. Brasil.
- Erlingsson, C., & Brysiewicz, P. (2017). A hands-on guide to doing content analysis. In *African Journal of Emergency Medicine* (Vol. 7, Issue 3). <https://doi.org/10.1016/j.afjem.2017.08.001>
- Farias, D. D. P., de Araújo, F. F., Neri-Numa, I. A., & Pastore, G. M. (2019). Prebiotics: Trends in food, health and technological applications. *Trends in Food Science and Technology*, 93, 23–35. <https://doi.org/10.1016/j.tifs.2019.09.004>
- Flores, D., & Lock, O. (2012). Reassessing the ancient use of sacha inchi (*Plukenetia volubilis* L.) for nutrition, health and cosmetics [Revalorizando el uso milenario del sacha inchi (*Plukenetia*

- volubilis L.) para la nutrición, la salud y la cosmética]. *Revista de Fitoterapia*, 13(1), 23–30.
- Flórez-Martínez, D. H., Contreras-Pedraza, C. A., & Rodríguez, J. (2021). A systematic analysis of non-centrifugal sugar cane processing: Research and new trends. *Trends in Food Science and Technology*, 107, 415–428. <https://doi.org/10.1016/j.tifs.2020.11.011>
- Follegatti-Romero, L. A., Piantino, C. R., Grimaldi, R., & Cabral, F. A. (2009). Supercritical CO₂ extraction of omega-3 rich oil from Sacha inchi (*Plukenetia volubilis* L.) seeds. *Journal of Supercritical Fluids*, 49(3), 323–329. <https://doi.org/10.1016/j.supflu.2009.03.010>
- Fu, Q., Niu, L., Zhang, Q., Pan, B.-Z., He, H., & Xu, Z.-F. (2014). Benzyladenine treatment promotes floral feminization and fruiting in a promising oilseed crop *Plukenetia volubilis*. *Industrial Crops and Products*, 59, 295–298. <https://doi.org/10.1016/j.indcrop.2014.05.028>
- Fu, Q., Niu, L., Chen, M. S. M.-S., Tao, Y. B. Y.-B., Wang, X., He, H., Pan, B. Z. B.-Z., & Xu, Z.-F. Z. F. (2018a). De novo transcriptome assembly and comparative analysis between male and benzyladenine-induced female inflorescence buds of *Plukenetia volubilis*. *Journal of Plant Physiology*, 221(December 2017), 107–118. <https://doi.org/10.1016/j.jplph.2017.12.006>
- Fu, Q., Niu, L., Chen, M. S., Tao, Y. Bin, Wang, X., He, H., Pan, B. Z., & Xu, Z. F. (2018b). De novo transcriptome assembly and comparative analysis between male and benzyladenine-induced female inflorescence buds of *Plukenetia volubilis*. *Journal of Plant Physiology*, 221, 107–118. <https://doi.org/10.1016/j.jplph.2017.12.006>
- García-García, L. A., & Rodríguez, M. (2018). Competitive and technology intelligence to reveal the most influential authors and inter-institutional collaborations on additive manufacturing for hand orthoses. *Journal of Intelligence Studies in Business*, 8(3), 32–44. <https://doi.org/https://doi.org/10.37380/jisib.v8i3.364>
- Geng, Y. J., Chen, L., Yang, C., Jiao, D. Y., Zhang, Y. H., & Cai, Z. Q. (2017). Dry-season deficit irrigation increases agricultural water use efficiency at the expense of yield and agronomic nutrient use efficiency of Sacha Inchi plants in a tropical humid monsoon area. *Industrial Crops and Products*, 109(September), 570–578. <https://doi.org/10.1016/j.indcrop.2017.09.022>
- Gong, H.-D., Geng, Y.-J., Yang, C., Jiao, D.-Y., Chen, L., & Cai, Z.-Q. (2018). Yield and resource use efficiency of *Plukenetia volubilis* plants at two distinct growth stages as affected by irrigation and fertilization. *Scientific Reports*, 8(1). <https://doi.org/10.1038/s41598-017-18342-6>
- Gonzales, R., Arévalo-López, L., Solis, R., & Marquez-Dávila, K. (2015). Respuesta de accesiones de sachá inchi *Plukenetia volubilis* L. a la infestación inducida del nematodo *Meloidogyne incognita* (Kofoid and White, 1919) Chitwood, 1949. In *Folia Amazónica: Vol. v. 22*. <https://doi.org/https://doi.org/10.24841/fa.v22i1-2.52>
- Guerrero-Abad, J. C., Padilla-Domínguez, A., Torres-Flores, E., López-Rodríguez, C., Guerrero-Abad, R. A., Coyne, D., Oehl, F., & Corazon-Guivín, M. A. (2021). A pathogen complex between the root knot nematode *Meloidogyne incognita* and *Fusarium verticillioides* results in extreme mortality of the inka nut (*Plukenetia volubilis*). *Journal of Applied Botany and Food Quality*, 94. <https://doi.org/10.5073/JABFQ.2021.094.019>
- Guillén, M. D., Ruiz, A., Cabo, N., Chirinos, R., & Pascual, G. (2003). Characterization of sachá inchi (*Plukenetia volubilis* L.) Oil by FTIR spectroscopy and ¹H NMR. Comparison with linseed oil. *JAOCs, Journal of the American Oil Chemists' Society*, 80(8), 755–762. <https://doi.org/10.1007/s11746-003-0768-z>
- Gutiérrez, L.-F., Quiñones-Segura, Y., Sanchez-Reinos, Z., Díaz, D. L., & Abril, J. I. (2017). Physicochemical properties of oils extracted from γ-irradiated Sacha Inchi (*Plukenetia volubilis* L.) seeds. *Food Chemistry*, 237, 581–587. <https://doi.org/10.1016/j.foodchem.2017.05.148>
- Gutiérrez, L.-F., Rosada, L.-M., & Jiménez, A. (2011). Chemical composition of sachá inchi (*Plukenetia volubilis* L.) seeds and characteristics of their lipid fraction. *Grasas y Aceites*, 62(1), 76–83. <https://doi.org/10.3989/gya044510>
- Hanssen, H.-P., & Schmitz-Hübsch, M. (2011). Sachá Inchi (*Plukenetia volubilis* L.) Nut Oil and Its Therapeutic and Nutritional Uses. In *Nuts and Seeds in Health and Disease Prevention*. Elsevier Inc. <https://doi.org/10.1016/B978-0-12-375688-6.10117-3>
- Henao Ramírez, A. M., Urrea Trujillo, A. I., & Atehortúa Garcés, L. (2022). In vitro germination and vegetative propagation through bud development of sachá inchi (*Plukenetia volubilis*). *Acta Biológica Colombiana*, 27(1). <https://doi.org/10.15446/abc.v27n1.88727>
- Hsieh, H.-F., & Shannon, S. E. (2005). Three approaches to qualitative content analysis. *Qualitative Health Research*, 15(9), 1277–1288. <https://doi.org/10.1177/1049732305276687>
- Hu, X.-D., Pan, B.-Z., Fu, Q., Chen, M.-S., & Xu, Z.-F. (2018). The complete chloroplast genome sequence of the biofuel plant Sachá Inchi, *Plukenetia volubilis*. *Mitochondrial DNA Part B: Resources*, 3(1), 328–329. <https://doi.org/10.1080/23802359.2018.1437816>
- INCAGRO. (2007). *Manual de Capacitación - Cultivo de Sachá Inchi*. https://www.academia.edu/19770262/MANUAL_SACHA_INC_HI
- INCAGRO. (2009). *Manual de buenas prácticas en el manejo orgánico de sachá inchik*. (Proyecto P). <https://cooperacionalemana.pe/GD/280/manualproduccion-desachainchi.pdf>
- Jang, M., You, S., & Kim, G.-H. (2020). Evaluation of antibacterial and antioxidant activities of sachá inchi (*Plukenetia volubilis* L.) leaf from Myanmar. *Korean Journal of Food Preservation*, 27(6), 781–790. <https://doi.org/10.11002/kjfp.2020.27.6.781>
- Jiao, D. Y., Xiang, M. H., Li, W. G., & Cai, Z. Q. (2012). Dry-season irrigation and fertilisation affect the growth, reproduction, and seed traits of *Plukenetia volubilis* L. plants in a tropical region. *Journal of Horticultural Science and Biotechnology*, 87(4), 311–316. <https://doi.org/10.1080/14620316.2012.11512870>
- Jiapong, S., & Ruttarattanamongkol, K. (2021). Development of direct expanded high protein snack products fortified with sachá inchi seed meal. *Journal of Microbiology, Biotechnology and Food Sciences*, 10(4), 680–684. <https://doi.org/10.15414/jmbfs.2021.10.4.680-684>
- Kim, D.-S., & Joo, N. (2019). Nutritional composition of Sachá inchi (*Plukenetia Volubilis* L.) as affected by different cooking methods. *International Journal of Food Properties*, 22(1), 1235–1241. <https://doi.org/10.1080/10942912.2019.1640247>
- Kim, D. S., Iida, F., & Joo, N. (2023). Nutritional composition of Sachá inchi (*Plukenetia volubilis*) according to cooking method and its application as an elder-friendly drink. *International Journal of Food Science and Technology*, 58(2). <https://doi.org/10.1111/ijfs.16249>
- Kittibunchakul, S., Hudthagosol, C., Sanporkha, P., Sapwarobol, S., Temviriyankul, P., & Suttisansanee, U. (2022). Evaluation of Sachá Inchi (*Plukenetia volubilis* L.) By-Products as Valuable and Sustainable Sources of Health Benefits. *Horticulturae*, 8(4). <https://doi.org/10.3390/horticulturae8040344>
- Kodahl, N. (2020). Sachá inchi (*Plukenetia volubilis* L.) - from lost crop of the Incas to part of the solution to global challenges? *Planta*, 251(4). <https://doi.org/10.1007/s00425-020-03377-3>
- Kodahl, N., García-Dávila, C. R., Cachique, D., Sørensen, M., & Lütken, H. (2018). An in vitro seed germination protocol for *Plukenetia volubilis* L. *Acta Horticulturae*, 1201, 549–554. <https://doi.org/10.17660/ActaHortic.2018.1201.73>
- Kodahl, N., & Sørensen, M. (2021). Sachá inchi (*Plukenetia volubilis* L.) is an underutilized crop with a great potential. *Agronomy*, 11(6). <https://doi.org/10.3390/agronomy11061066>

- Kong, S., Keang, T., Bunthan, M., Say, M., Nat, Y., Tan, C. P., & Tan, R. (2023). Hydraulic Cold-Pressed Extraction of Sacha Inchi Seeds: Oil Yield and Its Physicochemical Properties. *ChemEngineering*, 7(4). <https://doi.org/10.3390/chemengineering7040069>
- Kumar, B., Smita, K., Cumbal, L., & Debut, A. (2014). Synthesis of silver nanoparticles using Sacha inchi (*Plukenetia volubilis* L.) leaf extracts. *Saudi Journal of Biological Sciences*, 27(6), 605–609. <https://doi.org/10.1016/j.sjbs.2014.07.004>
- Kumar, B., Smita, K., Sánchez, E., Debut, A., & Cumbal, L. (2022). Phytosynthesis, characterization and catalytic activity of Sacha inchi leaf-assisted gold nanoparticles. *Chemical Papers*, 76(5). <https://doi.org/10.1007/s11696-022-02075-6>
- Lei, Y.-B., Zheng, Y.-L., Dai, K.-J., Duan, B.-L., & Cai, Z.-Q. (2014). Different responses of photosystem I and photosystem II in three tropical oilseed crops exposed to chilling stress and subsequent recovery. *Trees - Structure and Function*, 28(3), 923–933. <https://doi.org/10.1007/s00468-014-1007-0>
- Leydesdorff, L., & Milojević, S. (2015). Scientometrics. In *International Encyclopedia of the Social & Behavioral Sciences: Second Edition*. <https://doi.org/10.1016/B978-0-08-097086-8.85030-8>
- Liu, G., Wu, Z., Peng, Y., Shang, X., Xie, Y., & Arnold, R. J. (2020). Transcriptome analyses reveals the dynamic nature of oil accumulation during seed development of *Plukenetia volubilis* L. *Scientific Reports*, 10(1). <https://doi.org/10.1038/s41598-020-77177-w>
- Luna, R., & Bustamante Castillo, M. S. (2011). *Aplicación hormonal en la germinación de sachá inchi (Plukenetia volubilis L.) [UTEQ]*. <https://repositorio.uteq.edu.ec/handle/43000/2195>
- MADR, M. de A. y D. R., & UPRA, U. de P. R. A. (2021). Evaluaciones Agropecuarias Municipales - EVA. In *Datos Abiertos*. <https://www.agronet.gov.co/>
- Márquez-Dávila, K., Arévalo-López, L., Gonzáles, R., Vega, L., & Meza, M. (2020). Trichoderma and Clonostachys as biocontrol agents against Meloidogyne incognita in sachá inchi [Trichoderma e Clonostachys como agentes de biocontrol contra Meloidogyne incognita em sachá inchi]. *Pesquisa Agropecuaria Tropical*, 50, 1–10. <https://doi.org/10.1590/1983-40632020v5060890>
- Mingers, J., & Leydesdorff, L. (2015a). A review of theory and practice in scientometrics. In *European Journal of Operational Research*. <https://doi.org/10.1016/j.ejor.2015.04.002>
- Mingers, J., & Leydesdorff, L. (2015b). A Review of Theory and Practice in Scientometrics 1 European Journal of Operational Research (in press). *European Journal of Operational Research*, 246(1), 1–19. <https://doi.org/10.1016/j.ejor.2015.04.002>
- Ministerio de Agricultura y Desarrollo Rural - MADR. (2019). *Cadena de Sacha Inchi, Indicadores e Instrumentos*.
- Moral-Muñoz, J. A., Herrera-Viedma, E., Santisteban-Espejo, A., & Cobo, M. J. (2020). Software tools for conducting bibliometric analysis in science: An up-to-date review. *Profesional de La Información*, 29(1), 1–20. <https://doi.org/10.3145/epi.2020.ene.03>
- Mordor Intelligence. (2020a). *Global omega ingredients market (2020 – 2025)*.
- Mordor Intelligence. (2020b). *Global plant protein market (2020-2025)*.
- Morris, J. B., & Li Wang, M. (2018). Updated review of potential medicinal genetic resources in the USDA, ARS, PGRCU industrial and legume crop germplasm collections. *Industrial Crops and Products*, 123, 470–479. <https://doi.org/10.1016/j.indcrop.2018.07.014>
- Nascimento, A. K. L., Melo-Silveira, R. F., Dantas-Santos, N., Fernandes, J. M., Zucolotto, S. M., Rocha, H. A. O., & Scortecchi, K. C. (2013). Antioxidant and antiproliferative activities of leaf extracts from *Plukenetia volubilis* Linneo (Euphorbiaceae). *Evidence-Based Complementary and Alternative Medicine*, 2013. <https://doi.org/10.1155/2013/950272>
- Newman, N. C., Porter, A. L., Newman, D., Trumbach, C. C., & Bolan, S. D. (2014). Comparing methods to extract technical content for technological intelligence. *Journal of Engineering and Technology Management - JET-M*, 32, 97–109. <https://doi.org/10.1016/j.jengtecman.2013.09.001>
- Nie, C. R., Feng, Y., Cheng, X. H., & Cai, Z. Q. (2021). Intercropping with Chinese leek decreased Meloidogyne javanica population and shifted microbial community structure in Sacha Inchi plantation. *Journal of Agricultural Science*, 159(5–6). <https://doi.org/10.1017/S0021859621000708>
- Niu, L., Li, J., Chen, M.-S., & Xu, Z.-F. (2014). Determination of oil contents in Sacha inchi (*Plukenetia volubilis*) seeds at different developmental stages by two methods: Soxhlet extraction and time-domain nuclear magnetic resonance. *Industrial Crops and Products*, 56, 187–190. <https://doi.org/10.1016/j.indcrop.2014.03.007>
- Ocelák, M., Čepková, P. H., Viehmannová, I., Dvořáková, Z., Huansi, D. C., & Lojka, B. (2015). Genetic diversity of *Plukenetia volubilis* L. assessed by ISSR markers. *Scientia Agriculturae Bohemica*, 46(4), 145–153. <https://doi.org/10.1515/sab-2015-0029>
- Palop, F., & Martínez, J. F. (2012). Guía Metodológica de Práctica de la Vigilancia Tecnológica e Inteligencia Competitiva. *Proyecto Piloto de Transferencia y Desarrollo de Capacidades Regionales En Vigilancia Tecnológica e Inteligencia Competitiva*.
- Perona, J. S., García-Rodríguez, S., & Castellano, J. M. (2018). Plants as alternative sources of n-3 polyunsaturated fatty acids. In *Polyunsaturated Fatty Acids (PUFAs): Food Sources, Health Effects and Significance in Biochemistry* (pp. 187–228). Nova Science Publishers, Inc. <https://doi.org/https://digital.csic.es/handle/10261/200556>
- Pezo, M., Márquez-Dávila, K., & Solís, R. (2019). Gibberellic acid increases the yield of adult plants of sachá inchi (*Plukenetia volubilis*). *Scientia Agropecuaria*, 10(4), 455–460. <https://doi.org/10.17268/sci.agropecu.2019.04.01>
- Poljšak, N., & Kočevár Glavač, N. (2022). Vegetable Butters and Oils as Therapeutically and Cosmetically Active Ingredients for Dermal Use: A Review of Clinical Studies. In *Frontiers in Pharmacology* (Vol. 13). <https://doi.org/10.3389/fphar.2022.868461>
- Porter, A. L. (2005). QTIP: Quick technology intelligence processes. *Technological Forecasting and Social Change*, 72(9), 1070–1081. <https://doi.org/10.1016/j.techfore.2004.10.007>
- Preciado Ramírez, J. D., Alcívar Soria, E. E., Prado Chinga, A. E., & Guerra Herrera, K. S. (2021). Condiciones de mercado para la demanda nacional del Sacha Inchi en Ecuador. *Revista de Ciencias Sociales*, 27(1), 290–301.
- Price, D. D. S. (1976). A general theory of bibliometric and other cumulative advantage processes. *Journal of the American Society for Information Science*. <https://doi.org/10.1002/asi.4630270505>
- Quizhpe Salinas, L., & Villalba Cando, G. P. (2014). *Estudio productivo y económico del cultivo de Plukenetia volubilis (sachá inchi, maní indio) en la parroquia Jambeli, Cantón, Lago Agrio, Provincia de Sucumbios*. Universidad Nacional de Loja.
- Ramos-Escudero, F., Morales, M. T., Ramos Escudero, M., Muñoz, A. M., Cancino Chavez, K., & Asuero, A. G. (2021). Assessment of phenolic and volatile compounds of commercial Sacha inchi oils and sensory evaluation. *Food Research International*, 140. <https://doi.org/10.1016/j.foodres.2020.110022>
- Rodrigues, P. H. V., Bordignon, S. R., & Ambrosano, G. M. B. (2014). Horticultural performance of in vitro propagated plants of Sacha inchi [Desempenho horticultural de plantas propagadas in vitro de Sacha inchi]. *Ciencia Rural*, 44(6), 1050–1053. <https://doi.org/10.1590/S0103-84782014000600016>
- Rodríguez-Cortina, A., & Hernández-Carrión, M. (2023). Microcapsules of Sacha Inchi seed oil (*Plukenetia volubilis* L.)

- obtained by spray drying as a potential ingredient to formulate functional foods. *Food Research International*, 170. <https://doi.org/10.1016/j.foodres.2023.113014>
- Rodríguez-Cortina, Aureliano, Rodríguez-Cortina, J., & Hernández-Carrión, M. (2022). Obtention of Sacha Inchi (*Plukenetia volubilis* Linneo) Seed Oil Microcapsules as a Strategy for the Valorization of Amazonian Fruits: Physicochemical, Morphological, and Controlled Release Characterization. *Foods*, 11(24). <https://doi.org/10.3390/foods11243950>
- Sánchez-Torres, J. M., & Palop-Marro, F. (2002). *Herramientas de Software especializadas para Vigilancia Tecnológica e Inteligencia Competitiva* (Issue April 2002, p. 14).
- Sharma, V., Tsai, M. L., Sun, P. P., Chen, C. W., Nargotra, P., & Dong, C. Di. (2023). Sequential ultrasound assisted deep eutectic solvent-based protein extraction from Sacha inchi meal biomass: towards circular bioeconomy. *Journal of Food Science and Technology*, 60(4). <https://doi.org/10.1007/s13197-023-05689-0>
- Silva, K. F. C. E., da Silva Carvalho, A. G., Rabelo, R. S., & Hubinger, M. D. (2019). Sacha inchi oil encapsulation: Emulsion and alginate beads characterization. *Food and Bioprocess Processing*, 116, 118–129. <https://doi.org/10.1016/j.fbp.2019.05.001>
- Simawan, J., Klahan, R., Tola, S., & Yuangsoi, B. (2023). Influence of methanol-soaked treatment on the nutritional quality, antinutritional factors and nutrient digestibility of sacha inchi (*Plukenetia volubilis*) meal as protein ingredients in the diet of juvenile Nile tilapia (*Oreochromis niloticus*). *AAEL Bioflux*, 16(1).
- Suraya, A., Shahmi, M. H. A. H., & Noorshilawati, A. A. (2023). The effectiveness of amended NPK fertilizer and biochar in the medium of planting Sacha inchi (*Plukenetia volubilis*). *IOP Conference Series: Earth and Environmental Science*, 1182(1). <https://doi.org/10.1088/1755-1315/1182/1/012033>
- Solis, R., Pezo, M., Arévalo, L., Lao, C., Alegre, J., & Pérez, K. (2019). Evaluation of leguminous species as cover crops associated with sacha inchi [Avaliação de leguminosas como plantas de cobertura associadas a sachá inchi]. *Pesquisa Agropecuaria Tropical*, 49. <https://doi.org/10.1590/1983-40632019v4958011>
- Solis, Reynaldo, Gonzales, N., Pezo, M., Arévalo, L., & Vallejos-Torres, G. (2019). Rooting of sachá inchi (*Plukenetia volubilis*) juvenile cuttings in microtunnels. *Acta Agronomica*, 68(1), 35–40. <https://doi.org/10.15446/acag.v68n1.72101>
- Soongprasit, C., Aht-Ong, D., Sricharoenchai, V., & Atong, D. (2019). Catalytic Deoxygenation Pyrolysis of Sacha Inchi Shell over SBA-15 Catalyst: An Analytical PY-GC/MS. *IOP Conference Series: Earth and Environmental Science*, 219(1). <https://doi.org/10.1088/1755-1315/219/1/012016>
- Supriyanto, S., Imran, Z., Ardiansyah, R., Auliyai, B., Pratama, A., & Kadha, F. (2022). The Effect of Cultivation Conditions on Sacha Inchi (*Plukenetia volubilis* L.) Seed Production and Oil Quality (Omega 3, 6, 9). *Agronomy*, 12(3). <https://doi.org/10.3390/agronomy12030636>
- Suwanangul, S., Sangsawad, P., Alashi, M. A., Aluko, R. E., Tochampa, W., Chittrakorn, S., & Ruttarattanamongkol, K. (2021). Antioxidant activities of sachá inchi (*Plukenetia volubilis* L.) protein isolate and its hydrolysates produced with different proteases. *Maejo International Journal of Science and Technology*, 15(1), 48–60.
- Thuanthong, A., Klomkiao, S., Panyo, J., & Zhang, Y. (2023). In-Vitro Screenings for Biological and Antioxidant Activities of Aqueous Extract from Sacha Inchi (*Plukenetia volubilis* L.) Husks. *Trends in Sciences*, 20(11). <https://doi.org/10.48048/tis.2023.6815>
- Tian, Y., Lei, Y., Zheng, Y., & Cai, Z. (2013). Synergistic effect of colonization with arbuscular mycorrhizal fungi improves growth and drought tolerance of *Plukenetia volubilis* seedlings. *Acta Physiologiae Plantarum*, 35(3), 687–696. <https://doi.org/10.1007/s11738-012-1109-5>
- Tirado, J. C., Pastor, D. M., de Moraes, I. A., Lima, A. F., Godoy, H. T., Barbin, D. F., & Siche, R. (2023). Comparing data driven soft independent class analogy (DD-SIMCA) and one class partial least square (OC-PLS) to authenticate sachá inchi (*Plukenetia volubilis* L.) oil using portable NIR spectrometer. *Chemometrics and Intelligent Laboratory Systems*.
- Tunkam, P., & Satirapathkul, C. (2016). Preparation of nanoemulsion from Sacha inchi oil/water by emulsion phase inversion methods. *Key Engineering Materials*, 675–676, 57–60. <https://doi.org/10.4028/www.scientific.net/KEM.675-676.57>
- Uehara, S., & Moraes, R. O. (2017). Atividades de inteligência competitiva em uma unidade de P&D. *Espacios*, 38(16).
- Valente, M., Chaves, F., Lopes, M., Oka, J., & Rodrigues, R. (2017). Crop yield, genetic parameter estimation and selection of sachá inchi in central Amazon. *Pesquisa Agropecuaria Tropical*, 47(2), 223–236. <https://doi.org/10.1590/1983-40632016v4745758>
- Valente, M., Lopes, M., Chaves, F., Pantoja, M., Sousa, F., & Chagas, E. (2017). Molecular genetic diversity and mating system in sachá inchi progenies. *Pesquisa Agropecuária Tropical*, 47(4), 480–487. <https://doi.org/10.1590/1983-40632017v4749799>
- Valente, M. S. F., Lopes, M. T. G., Chaves, F. C. M., Oliveira, A. M., & Freitas, D. R. B. de. (2017). Repetibilidade de caracteres biométricos e de produção em frutos e sementes de sachá inchi. *Acta Amazonica*, 47(3), 195–202. <https://doi.org/10.1590/1809-4392201602623>
- van Eck, N. J., & Waltman, L. (2010). Software survey: VOSviewer, a computer program for bibliometric mapping. *Scientometrics*. <https://doi.org/10.1007/s11192-009-0146-3>
- Van, Q. V., Thi, N. Y. P., Thi, T. N., Van, M. N., Van, T. Le, Thi, B. N. V., & Thi, B. H. N. (2022). Variation in Growth and Yield of Sachá Inchi (*Plukenetia Volubilis* L.) under Different Ecological Regions in Vietnam. *Journal of Ecological Engineering*, 23(8). <https://doi.org/10.12911/22998993/150659>
- Vanegas-Azuero, A.-M., & Gutiérrez, L.-F. (2018). Physicochemical and sensory properties of yogurts containing sachá inchi (*Plukenetia volubilis* L.) seeds and β -glucans from *Ganoderma lucidum*. *Journal of Dairy Science*, 101(2), 1020–1033. <https://doi.org/10.3168/jds.2017-13235>
- Vicente, J., Cappato, L. P., de Araújo Calado, V. M., de Carvalho, M. G., & Garcia-Rojas, E. E. (2018). Thermal and oxidative stability of Sachá Inchi oil and capsules formed with biopolymers analyzed by DSC and ¹H NMR. *Journal of Thermal Analysis and Calorimetry*, 131(3), 2093–2104. <https://doi.org/10.1007/s10973-017-6759-5>
- Villamil, R. A., Cortés, L. Y., & Gutiérrez, L. F. (2023). Physicochemical and sensory properties of Sachá Inchi oil-functionalized stirred yogurt. *International Journal of Food Science and Technology*, 58(7). <https://doi.org/10.1111/ijfs.16470>
- Villanueva-Corralles, S., García-Botero, C., Garcés-Cardona, F., Ramírez-Ríos, V., Villanueva-Mejía, D. F., & Álvarez, J. C. (2021). The Complete Chloroplast Genome of *Plukenetia volubilis* Provides Insights Into the Organelle Inheritance. *Frontiers in Plant Science*, 12. <https://doi.org/10.3389/fpls.2021.667060>
- Vitar, J., Barrera, J., Alvarado, C., Giraldo, B., Hernández, M. S., & Martínez, O. (2023). Photosynthetic response of *Plukenetia volubilis* L. to light intensity and soil water availability in young plants. *Acta Horticulturae*, 1366. <https://doi.org/10.17660/ActaHortic.2023.1366.36>
- Wang, G. F., Li, H., Zhou, Y., Yang, L. Y., Ding, Z. J., Huang, J. S., & Pan, B. Z. (2019). Bacterial wilt of sachá inchi (*Plukenetia volubilis*) caused by *Ralstonia pseudosolanacearum* phylogroup in Southern China. *Plant Disease*, 103(2), 364. <https://doi.org/10.1094/PDIS-04-18-0615-PDN>
- Wang, S., Chen, X., Gong, H., & Cai, Z. (2018). Response of soil microbial abundance and diversity in Sachá Inchi (*Plukenetia volubilis* L.) farms with different land-use histories in a tropical

- area of Southwestern China. *Archives of Agronomy and Soil Science*, 64(4), 588–596. <https://doi.org/10.1080/03650340.2017.1373183>
- Wang, Sunan, Zhu, F., & Kakuda, Y. (2018). Sacha inchi (*Plukenetia volubilis* L.): Nutritional composition, biological activity, and uses. *Food Chemistry*, 265, 316–328. <https://doi.org/10.1016/j.foodchem.2018.05.055>
- Wang, W., Liu, Z., Wang, W., & Song, X. (2020). First Report of *Macrophomina phaseolina* Causing Stalk Rot of Sacha Inchi (*Plukenetia volubilis*) in China. *Plant Disease*, 104(2). <https://doi.org/10.1094/pdis-06-19-1312-pdn>
- Wang, Y., Xie, Y., Cui, H. D., & Dong, Y. (2014). First report of *Meloidogyne javanica* on sacha inchi (*Plukenetia volubilis*) in China. *Plant Disease*, 98(1), 165. <https://doi.org/10.1094/PDIS-03-13-0241-PDN>
- Wiriya, J., Rangjaroen, C., Teaumroong, N., Sungthong, R., & Lumyong, S. (2020). Rhizobacteria and arbuscular mycorrhizal fungi of oil crops (Physic nut and Sacha Inchi): A cultivable-based assessment for abundance, diversity, and plant growth-promoting potentials. *Plants*, 9(12), 1–21. <https://doi.org/10.3390/plants9121773>
- Wongpattananukul, S., Nungarlee, U., Ruangprach, A., Sulong, S., Sanporkha, P., Adisakwattana, S., & Ngamukote, S. (2022). Effect of Inca peanut oil on omega-3 polyunsaturated fatty acids, physicochemical, texture and sensory properties in chicken sausage. *LWT*, 163. <https://doi.org/10.1016/j.lwt.2022.113559>
- Xiaojuan, W., Ronghua, X., Ruling, W., Aizhong, L., Wang, X., Xu, R., Wang, R., & Liu, A. (2012). Transcriptome analysis of Sacha Inchi (*Plukenetia volubilis* L.) seeds at two developmental stages. *BMC Genomics*, 13(716), 1–16. <https://doi.org/10.1186/1471-2164-13-716>
- Yamuangmorn, S., Laorong, K., Saenchai, C., Lordkaew, S., Dell, B., & Prom-u-Thai, C. (2022). Boron requirement for vegetative growth of Sacha inchi (*Plukenetia volubilis* L.). *Journal of Plant Nutrition*, 45(6). <https://doi.org/10.1080/01904167.2021.1994594>
- Yang, C., Jiao, D. Y., Cai, Z. Q., Gong, H. D., & Li, G. Y. (2016). Vegetative and reproductive growth and yield of *Plukenetia volubilis* plants in responses to foliar application of plant growth regulators. *HortScience*, 51(8), 1020–1025. <https://doi.org/10.21273/hortsci.51.8.1020>
- Yang, C., Jiao, D. Y., Geng, Y. J., Cai, C. T., & Cai, Z. Q. (2014). Planting density and fertilisation independently affect seed and oil yields in *Plukenetia volubilis* L. *Plants. Journal of Horticultural Science and Biotechnology*, 89(2), 201–207. <https://doi.org/10.1080/14620316.2014.11513069>
- Zhao, W., Lu, S., Peng, D., Zhao, C., Du, B., & Li, P. (2022). Antioxidant and Immunological Activities of Sacha Inchi Soluble Dietary Fiber. *Shipin Kexue/Food Science*, 43(13). <https://doi.org/10.7506/spkx1002-6630-20210713-143>